



April 14, 2017

Information & Technology Unit
California Regional Water Quality Control Board, Los Angeles Region
320 West Fourth Street, Suite 200
Los Angeles, California 90013

Subject: **GROUNDWATER DISCHARGE MONITORING REPORT
QUARTER 1, 2017
NPDES No. CAG994004; Compliance File No. CI-7585**
Defense Fuel Support Point, Norwalk
15306 Norwalk Boulevard
Norwalk, California

On behalf of The Defense Logistics Agency Installation Support for Energy (DLA Energy), The Source Group, Inc. (SGI) presents this groundwater discharge monitoring report to summarize the National Pollutant Discharge Elimination System (NPDES) monitoring activities for Quarter 1, 2017 at Defense Fuel Support Point (DFSP), Norwalk located at 15306 Norwalk Boulevard, in Norwalk, California (Site).

SUMMARY OF REMEDIATION PROGRESS AND DISCHARGE VOLUMES

Active remediation systems at the Site consist of a soil vapor extraction system (VES) and a groundwater extraction and treatment system (GWETS) for treatment of extracted soil vapors and groundwater to address the entire former tank farm, the former water tank, former truck fueling, and pump house areas during the subject reporting period.

The GWETS consists of five vertical extraction wells (four 6-inch diameter wells and one 4-inch diameter well), three bag filter vessels, two MYCELX oil separator vessels, three granular activated carbon (GAC) vessels, and two ion exchange vessels. Four wells (GW-2, GW-13, GW-15, and GW-16) were in operation during this reporting period. As summarized in Table 1, the treated groundwater was discharged in accordance with NPDES Permit No. CAG994004, Compliance File No. CI-7585 with the exception that the Arsenic result from sampling conducted on January 9, 2017 yielded a value that is slightly above the monthly limit (see Summary of Non-Compliance section).

The GWETS discharge volumes and field notes for the reporting period are summarized in Tables 2a, 2b, and 2c. Periodic site visits were conducted to assess and optimize system operation and record operational data. The total volume of groundwater extracted by the GWETS during this reporting period was approximately 467,663 gallons. Based on the total petroleum hydrocarbons as diesel (TPHd) results for influent water samples and total groundwater extracted, the mass of TPHd removed by the GWETS was approximately 0.6 pounds (Table 2c) during Quarter 1, 2017.

There were no changes in the operation of the facility that have or would change the character, location, or volume of the groundwater discharge.

SUMMARY OF COMPLIANCE RESULTS

Representative samples of treated groundwater were collected from the system effluent and analyzed for compounds as required by the Monitoring and Reporting Program (MRP). The sampling results indicate concentrations were below detection limits or did not exceed permit required discharge levels. The sample dates and summary of test results are provided in Table 1. Laboratory analytical reports and chain-of-custody documents are included in Appendix A.

Compliance samples were submitted to a laboratory certified for analyses of requested methods by the California Department of Public Health (CDPH) Environmental Laboratory Approval Program (ELAP). The laboratory analyzed samples in batches with other samples of similar matrix and analyzed quality control samples with each batch to assess method precision and accuracy. Duplicate sample or matrix spike/matrix spike duplicate sample pairs were analyzed to assess method precision. Matrix spike sample results also demonstrate method accuracy. Method blank and laboratory control samples are analyzed to assess potential laboratory contamination and method accuracy without potential matrix interferences, respectively.

Note that per SGI's January 13, 2017 *Groundwater Discharge Monitoring Report*, accelerated acute toxicity testing continued this period based upon an anomalous annual 2016 sampling result (event conducted on November 1, 2016) that was not repeatable (i.e., confirmation sampling event conducted on November 7, 2016 yielded a result of 98% survival) and considered suspect since no definitive cause could be identified. Based upon the fact that all subsequent accelerated monitoring results from samples collected during December 2016, January 2017 and February 2017 yielded 100% survival (laboratory analytical reports and chain-of-custody documents from this period included in Appendix A), the acute toxicity result from the annual 2016 event has been concluded to be due to test method variability and/or some other false positive. Regular annual acute toxicity testing is therefore scheduled to resume during November 2017 in accordance with Section IV, Part A.4 of the Monitoring and Reporting Program (MRP).

SUMMARY OF NON-COMPLIANCE

The GWETS operated in compliance with NPDES No. CAG994004, CI-7585 during this reporting period with the exception that Arsenic was detected slightly above its effluent permit limit during the monthly sampling event for January 2017. As indicated on Table 1, discharge was terminated on January 17, 2017 upon receipt of the January 9, 2017 analytical data from the laboratory in accordance with General Monitoring Provision U of the MRP.

Discharge resumed on January 23, 2017 following the implementation of remedial measures to ensure compliance with the effluent Arsenic limit. Additionally, accelerated effluent Arsenic monitoring was conducted for three consecutive weeks per General Monitoring Provision V of the MRP with all of the analytical results demonstrating full compliance with the effluent Arsenic limit. Regular monthly monitoring for this constituent therefore resumed during March 2017 in accordance with General Monitoring Provision V or the MRP.

LABORATORY CERTIFICATION

All analyses were conducted at a laboratory certified for such analyses by the CDPH or approved by the Executive Officer and in accordance with current United States Environmental Protection Agency (USEPA) guideline procedures or as specified in this MRP. The laboratory's quality control data is included in the laboratory analytical reports provided in Appendix A. A copy of the laboratory ELAP certification is provided in Appendix B.

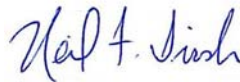
REPORT CERTIFICATION

The DLA Energy report certification is provided in Appendix C.

Sincerely,



Michael Wood, P.E.
Senior Engineer



Neil F. Irish, P.G. 5484
Principal Geologist

Attachments and Distribution on Next Page.

Attachments:

Table 1 – Summary of Effluent Groundwater Analytical Sampling Results - 1st Quarter 2017
Table 2a – Groundwater Extraction and Treatment System Operations Summary - January
Table 2b – Groundwater Extraction and Treatment System Operations Summary - February
Table 2c – Groundwater Extraction and Treatment System Operations Summary - March

Appendix A – Laboratory Analytical Reports and Chain-of-Custody Documents
Appendix B – Laboratory ELAP Certification
Appendix C – Report Certification

cc: Mr. Paul Cho, LARWQCB
Ms. Carol Devier-Heeney, DLA-E
Mr. Todd Williams, DLA-E
Maj. Justin Settles, DLA-E
Ms. Adriana Figueroa, City of Norwalk
Mr. Brian Partington, Water Replenishment District
Mr. Everett Ferguson, Water Replenishment District
Mr. Charles Emig, City of Cerritos
Ms. Perla Hernandez, Office of Congresswoman Grace Napolitano
Ms. Yvette Shahinian, Office of Congresswoman Linda T. Sánchez
Ms. Yahaira Ortiz, Office of State Senator Tony Mendoza
Mr. Norman Dupont, Richards Watson Gershon
Mr. Adam Ly, Liberty Utilities
Mr. Walter Scherer, March ARB
Mr. Michael T. Wilson, Air Force Real Property Agency
Ms. Minxia Dong, Norwalk Regional Library
Mr. Steve Defibaugh, KMI
Mr. Dan Jablonski, CH2M HILL
Ms. Lorena Sierra, John Dolland Elementary School
Ms. Iso Nakasato, Office of Assemblymember Christina Garcia
Ms. Mary Jane McIntosh, RAB Community Member
Ms. Tracy Winkler, RAB Community Member

TABLES

TABLE 1
Summary of Effluent Groundwater Analytical Sampling Results - 1st Quarter 2017
 DFSP, Norwalk
 15306 Norwalk Blvd., Norwalk, CA

Sampling Frequency			Monthly							Quarterly											Annually	
Laboratory Analysis Methods			--	SM 4500 H+B	--	EPA 8015B (M)	EPA 8260B	EPA 8260B	EPA 6020	SM 5520 B	EPA 6020	SM 2130 B	SM 4500 S2-D	SM 4500-CI F	SM 2540 C	SM 2540 D	SM 2540 F	SM 5540 C	EPA 420.1	SM 5210 B	EPA 2000.0	
Daily Discharge Limitations			--	--	--	100 µg/L	5 µg/L	12 µg/L	10 µg/L	15 mg/L	30 µg/L	150 NTU	1.0 mg/L	0.1 mg/L	--	75 mg/L	0.3 mL/L	0.5 mg/L	1.0 mg/L	30 mg/L	--	
Monthly Discharge Limitations			--	--	--	--	--	--	--	10 mg/L	15 µg/L	50 NTU	--	--	--	50 mg/L	0.1 mL/L	--	--	20 mg/L	--	
Sample Date	Notes	GWETS Wells On Line	Average Flow Rate	pH ^a	Temp-erature	TPH	MTBE	TBA	Arsenic	Oil & Grease	Copper	Turbidity	Sulfides	Residual Chlorine	Total Dissolved Solids	Total Suspended Solids	Settleable Solids	MBAS	Phenols	BOD ₅ 20°C	Acute Toxicity	
			(gpm)	pH units	°C	(µg/L)	(µg/L)	(µg/L)	(µg/L)	(mg/L)	(µg/L)	(NTU)	(mg/L)	(mg/L)	(mg/L)	(mg/L)	(mg/L)	(mL/L)	(mg/L)	(mg/L)	(mg/L)	(% Survival)
01/09/17	1,2	GW-2, GW-13, GW-15, GW-16	5.5	7.68	17.6	<100	<0.40	<7.0	17	--	--	--	--	--	--	--	--	--	--	--	--	100
01/23/17	3,4	GW-2, GW-13, GW-15, GW-16	3.5	--	--	--	--	--	<6.0	--	--	--	--	--	--	--	--	--	--	--	--	--
02/01/17	4	GW-2, GW-13, GW-15, GW-16	3.5	--	--	--	--	--	<6.0	--	--	--	--	--	--	--	--	--	--	--	--	--
02/06/17	1,4,5	GW-2, GW-13, GW-15, GW-16	5.0	7.38	15.1	<100	<0.40	<7.0	<6.0	--	--	--	--	<0.1 ^b	--	--	--	--	--	--	--	100
03/15/17	6	GW-2, GW-13, GW-15, GW-16	4.3	7.47	20.1	<100	<0.40	<7.0	<6.0	--	--	--	--	--	--	--	--	--	--	--	--	--
03/31/17	7,8	GW-2, GW-13, GW-15, GW-16	3.0	7.55	19.0	<100	<0.40	<7.0	<6.0	<5.0	<2.0	1.0	<0.027	<0.5	<6.2	<5.0	<0.1	<0.05	<0.15	<5.0	--	

Legend / Notes:

GWETS = Groundwater extraction and treatment system

TPH = Total petroleum hydrocarbons (gasoline range organics [GRO] and diesel range organics [DRO])

MTBE = Methyl tertiary-butyl ether

TBA = tertiary-Butyl alcohol

MBAS = Methylene blue active substances

BOD = Biochemical oxygen demand

gpm = Gallons per minute

mg/L = Micrograms per liter

mg/L = Milligrams per liter

NTU = Nephelometric Turbidity Units

mL/L = Milliliters per liter

<0.40 = Not detected at or above the Method Detection Limit (MDL) shown.

-- = Not measured or analyzed

J = Laboratory estimated value since analyte detected below Method Reporting Limit (MRL) but above MDL.

a = Measured in the field using an Oakton® pH Tester Model 30.

b = Measured in the field using a HACH® Chlorine Test Kit Model CN-70.

1 = Acute toxicity result from additional sample collected as part of accelerated permit compliance monitoring conducted in accordance with Section IV, Part A.4 of the Monitoring and Reporting Program (MRP) (results from all three required monthly events dating back to December 2016 demonstrated full compliance with survival threshold so regular annual acute toxicity testing will resume during November 2017).

2 = GWETS manually shutdown on January 17, 2017 following receipt of analytical result for Arsenic from January 9, 2017 sampling event in accordance with General Monitoring Provision U of the MRP.

3 = GWETS restarted following implementation of remedial measures to ensure compliance with effluent Arsenic limit per General Monitoring Provision U of the MRP.

4 = Arsenic result from additional sample collected as part of accelerated permit compliance monitoring conducted per General Monitoring Provision V of the MRP (results from all three required weekly events demonstrated full compliance with effluent Arsenic limit so regular monthly monitoring resumed during March 2017).

5 = Acute toxicity sample collected on February 7, 2017.

6 = GWETS off-line from March 8-15, 2017 pending the completion of media change out work.

7 = Pumps in wells GW-15 and GW-16 restarted after being off-line for repair work since March 27, 2017.

8 = Quarterly sampling normally conducted during February per General Monitoring Provision R of the MRP (i.e., samples inadvertently not collected during February 6, 2017 event and oversight not discovered until late March 2017).

TABLE 2a
Groundwater Extraction and Treatment System Operations Summary - January
 DFSP, Norwalk
 15306 Norwalk Blvd., Norwalk, CA

Date	Data Source	Notes	GW-2 Totalizer Reading (gallons)	GW-13 Totalizer Reading (gallons)	GW-15 Totalizer Reading (gallons)	GW-16 Totalizer Reading (gallons)	Groundwater Extracted from North-East Area (gallons)	Groundwater Extracted from North-West Area (gallons)	NPDES Discharge Totalizer Reading (gallons)	Influent DRO (ug/L)	Cumulative DRO Removed ^A (lb)
01/01/17	*		86,978	4,002,220	2,219,019	7,819,255	10,038,274	4,089,198	75,849,280	--	9,944
01/02/17	*		87,818	4,002,675	2,221,967	7,820,948	10,042,915	4,090,493	75,854,312	--	9,944
01/03/17	*		88,658	4,003,130	2,224,915	7,822,641	10,047,556	4,091,788	75,859,345	--	9,944
01/04/17	*		89,498	4,003,585	2,227,862	7,824,334	10,052,196	4,093,083	75,864,377	--	9,944
01/05/17	Technician		90,574	4,004,168	2,231,639	7,826,503	10,058,142	4,094,742	75,870,825	--	9,944
01/06/17	*		92,024	4,005,090	2,235,666	7,829,779	10,065,445	4,097,113	75,878,794	--	9,944
01/07/17	*		93,473	4,006,012	2,239,693	7,833,055	10,072,748	4,099,485	75,886,763	--	9,944
01/08/17	*		94,923	4,006,933	2,243,721	7,836,331	10,080,052	4,101,856	75,894,731	--	9,944
01/09/17	Technician	1,2	95,995	4,007,615	2,246,699	7,838,754	10,085,453	4,103,610	75,900,625	150	9,944
01/10/17	*		97,279	4,008,836	2,249,802	7,841,909	10,091,711	4,106,115	75,907,762	--	9,944
01/11/17	*		98,563	4,010,057	2,252,904	7,845,064	10,097,968	4,108,620	75,914,899	--	9,944
01/12/17	*		99,847	4,011,278	2,256,007	7,848,219	10,104,226	4,111,125	75,922,036	--	9,944
01/13/17	Technician		101,399	4,012,753	2,259,756	7,852,031	10,111,787	4,114,152	75,930,660	--	9,944
01/14/17	*		102,909	4,014,378	2,261,907	7,855,443	10,117,349	4,117,287	75,937,749	--	9,944
01/15/17	*		104,418	4,016,004	2,264,057	7,858,855	10,122,912	4,120,422	75,944,837	--	9,944
01/16/17	*		105,928	4,017,629	2,266,208	7,862,267	10,128,474	4,123,557	75,951,926	--	9,944
01/17/17	Technician	3	107,359	4,019,170	2,268,246	7,865,501	10,133,747	4,126,529	75,958,645	--	9,944
01/18/17	Off line		107,359	4,019,170	2,268,246	7,865,501	10,133,747	4,126,529	75,958,645	--	9,944
01/19/17	Off line		107,359	4,019,170	2,268,246	7,865,501	10,133,747	4,126,529	75,958,645	--	9,944
01/20/17	Off line		107,359	4,019,170	2,268,246	7,865,501	10,133,747	4,126,529	75,958,645	--	9,944
01/21/17	Off line		107,359	4,019,170	2,268,246	7,865,501	10,133,747	4,126,529	75,958,645	--	9,944
01/22/17	Off line		107,359	4,019,170	2,268,246	7,865,501	10,133,747	4,126,529	75,958,645	--	9,944
01/23/17	Technician	4,5	107,359	4,019,170	2,268,246	7,865,501	10,133,747	4,126,529	75,958,645	--	9,944
01/24/17	*		108,582	4,020,031	2,270,525	7,867,871	10,138,396	4,128,613	75,963,705	--	9,944
01/25/17	*		109,805	4,020,892	2,272,803	7,870,241	10,143,044	4,130,697	75,968,766	--	9,944
01/26/17	*		111,027	4,021,753	2,275,082	7,872,611	10,147,693	4,132,780	75,973,826	--	9,944
01/27/17	*		112,250	4,022,614	2,277,361	7,874,981	10,152,342	4,134,864	75,978,887	--	9,944
01/28/17	*		113,473	4,023,475	2,279,639	7,877,351	10,156,990	4,136,948	75,983,947	--	9,944
01/29/17	*		114,696	4,024,336	2,281,918	7,879,721	10,161,639	4,139,032	75,989,007	--	9,944
01/30/17	*		115,919	4,025,197	2,284,197	7,882,091	10,166,288	4,141,115	75,994,068	--	9,944
01/31/17	*		117,141	4,026,058	2,286,475	7,884,461	10,170,936	4,143,199	75,999,128	--	9,944

Cumulative Groundwater Discharged by the GWETS to Date (gallons)							
Period	January	Quarter 1, 2017	Quarter 2, 2017	Quarter 3, 2017	Quarter 4, 2017	2017 to Date	April 1996 to Date
Volume	154,881	154,881	--	--	--	154,881	75,999,128

Cumulative Mass DRO Removed by the GWETS ^A (lb)			
Period	January	Quarter 1 to Date	April 1996 to Date
Mass	0.32	0.32	9,944.1

$$Liquid-Phase DRO Mass [lb] = \left(Conc. \left[\frac{\mu g}{L} \right] \right) \cdot \left(\frac{3.785 L}{gal} \right) \cdot \left(\frac{1 g}{1,000,000 \mu g} \right) \cdot \left(\frac{1 lb}{453.59 g} \right) \cdot (Volume [gal])$$

Legend / Notes:

- 1 = Collected monthly influent, intermediate, and effluent samples for laboratory analysis.
- 2 = Collected monthly effluent acute toxicity testing sample for laboratory analysis as part of required accelerated permit compliance monitoring (laboratory report attached).
- 3 = GWETS manually shut down for maintenance.
- 4 = GWETS restarted.
- 5 = Collected weekly effluent arsenic sample for laboratory analysis as part of required accelerated permit compliance monitoring (laboratory report attached).

GWETS = Groundwater extraction and treatment system
 μg/L - Micrograms per liter
 lb = Pounds
 DRO = Diesel range organics

A = Hydrocarbon removal is calculated using analytical laboratory result for DRO (if not detected, half the detection limit is used) from sample collected on: 01/09/17 (laboratory report attached).

-- = Not applicable
 * = Operational values interpolated from chart recorder data or previous monitoring event.

TABLE 2b
Groundwater Extraction and Treatment System Operations Summary - February
 DFSP, Norwalk
 15306 Norwalk Blvd., Norwalk, CA

Date	Data Source	Notes	GW-2 Totalizer Reading (gallons)	GW-13 Totalizer Reading (gallons)	GW-15 Totalizer Reading (gallons)	GW-16 Totalizer Reading (gallons)	Groundwater Extracted from North-East Area (gallons)	Groundwater Extracted from North-West Area (gallons)	NPDES Discharge Totalizer Reading (gallons)	Influent DRO (ug/L)	Cumulative DRO Removed ^A (lb)
02/01/17	Technician	1	118,309	4,026,880	2,288,651	7,886,724	10,175,375	4,145,189	76,003,960	--	9,944
02/02/17	*		119,578	4,028,077	2,291,984	7,889,423	10,181,407	4,147,655	76,011,971	--	9,944
02/03/17	*		120,846	4,029,274	2,295,317	7,892,123	10,187,440	4,150,120	76,019,982	--	9,944
02/04/17	Auto Shutdown	2	122,696	4,031,020	2,300,178	7,896,059	10,196,237	4,153,716	76,031,665	--	9,944
02/05/17	Off line		122,696	4,031,020	2,300,178	7,896,059	10,196,237	4,153,716	76,031,665	--	9,944
02/06/17	Technician	3,4,5,6	122,696	4,031,020	2,300,178	7,896,059	10,196,237	4,153,716	76,031,665	110	9,944
02/07/17	Technician	6	123,900	4,032,294	2,304,281	7,898,771	10,203,052	4,156,195	76,038,839	--	9,944
02/08/17	*		125,105	4,033,569	2,308,384	7,901,484	10,209,868	4,158,673	76,046,014	--	9,944
02/09/17	Technician		126,447	4,034,989	2,312,957	7,904,507	10,217,464	4,161,436	76,054,010	--	9,944
02/10/17	*		127,650	4,036,443	2,317,000	7,907,263	10,224,262	4,164,093	76,060,663	--	9,944
02/11/17	*		128,853	4,037,897	2,321,042	7,910,019	10,231,061	4,166,749	76,067,315	--	9,944
02/12/17	*		130,055	4,039,350	2,325,085	7,912,774	10,237,859	4,169,406	76,073,968	--	9,944
02/13/17	Technician		131,258	4,040,804	2,329,127	7,915,530	10,244,657	4,172,062	76,080,620	--	9,944
02/14/17	*		132,456	4,042,288	2,334,224	7,919,052	10,253,276	4,174,743	76,088,706	--	9,944
02/15/17	*		133,653	4,043,771	2,339,321	7,922,575	10,261,895	4,177,425	76,096,793	--	9,944
02/16/17	*		134,851	4,045,255	2,344,417	7,926,097	10,270,514	4,180,106	76,104,879	--	9,944
02/17/17	Technician		135,737	4,046,352	2,348,187	7,928,702	10,276,889	4,182,089	76,110,860	--	9,944
02/18/17	*		136,901	4,048,216	2,350,341	7,932,094	10,282,434	4,185,117	76,118,039	--	9,944
02/19/17	*		138,064	4,050,081	2,352,495	7,935,485	10,287,980	4,188,145	76,125,218	--	9,944
02/20/17	*		139,228	4,051,945	2,354,648	7,938,877	10,293,525	4,191,173	76,132,397	--	9,944
02/21/17	Technician		140,695	4,054,295	2,357,363	7,943,152	10,300,515	4,194,990	76,141,445	--	9,944
02/22/17	*		141,945	4,055,670	2,362,068	7,943,220	10,305,288	4,197,615	76,148,151	--	9,944
02/23/17	*		143,196	4,057,044	2,366,773	7,943,288	10,310,061	4,200,240	76,154,857	--	9,944
02/24/17	*		144,446	4,058,419	2,371,478	7,943,356	10,314,834	4,202,865	76,161,563	--	9,944
02/25/17	*		145,697	4,059,794	2,376,184	7,943,424	10,319,608	4,205,491	76,168,269	--	9,944
02/26/17	*		146,947	4,061,168	2,380,889	7,943,492	10,324,381	4,208,116	76,174,975	--	9,944
02/27/17	Technician		148,237	4,062,586	2,385,741	7,943,562	10,329,303	4,210,823	76,181,890	--	9,944
02/28/17	*		149,495	4,063,970	2,388,908	7,947,224	10,336,132	4,213,465	76,189,062	--	9,944

Cumulative Groundwater Discharged by the GWETS (gallons)

Period	February	Quarter 1, 2017	Quarter 2, 2017	Quarter 3, 2017	Quarter 4, 2017	2017 to Date	April 1996 to Date
Volume	189,934	344,815	--	--	--	344,815	76,189,062

Cumulative Mass DRO Removed by the GWETS ^A (lb)

Period	February	Quarter 1 to Date	April 1996 to Date
Mass	0.19	0.51	9,944.3

$$Liquid-Phase\ DRO\ Mass\ [lb] = \left(Conc. \left[\frac{\mu g}{L} \right] \right) \cdot \left(\frac{3.785\ L}{gal} \right) \cdot \left(\frac{1\ g}{1,000,000\ \mu g} \right) \cdot \left(\frac{1\ lb}{453.59\ g} \right) \cdot (Volume\ [gal])$$

Legend / Notes:

- 1 = Collected weekly effluent arsenic sample for laboratory analysis as part of required accelerated permit compliance monitoring (laboratory report attached).
- 2 = GWETS automatically shutdown due to power failure.
- 3 = GWETS restarted.
- 4 = Collected monthly process, intermediate and effluent samples for laboratory analysis.
- 5 = Measured residual chlorine in the field using HACH Test Kit Model CN-70.
- 6 = Collected final weekly effluent arsenic sample (02/06/17) and monthly effluent acute toxicity sample (02/07/17) for confirmation compliance analysis under accelerated monitoring requirements (laboratory reports attached).

GWETS = Groundwater extraction and treatment system lb = Pounds
 ug/L - Micrograms per liter DRO = Diesel range organics

A = Hydrocarbon removal is calculated using analytical laboratory result for DRO (if not detected, half the detection limit is used) from sample collected on: 02/06/16 (laboratory report attached).

-- = Not applicable

* = Operational values interpolated from chart recorder data or previous monitoring event.

Groundwater extraction wells on line this month: GW-2, GW-13, GW-15, GW-16

TABLE 2c
Groundwater Extraction and Treatment System Operations Summary - March
 DFSP, Norwalk
 15306 Norwalk Blvd., Norwalk, CA

Date	Data Source	Notes	GW-2 Totalizer Reading (gallons)	GW-13 Totalizer Reading (gallons)	GW-15 Totalizer Reading (gallons)	GW-16 Totalizer Reading (gallons)	Groundwater Extracted from North-East Area (gallons)	Groundwater Extracted from North-West Area (gallons)	NPDES Discharge Totalizer Reading (gallons)	Influent DRO (ug/L)	Cumulative DRO Removed ^A (lb)
03/01/17	Technician		150,684	4,065,277	2,391,900	7,950,682	10,342,582	4,215,961	76,195,836	--	9,944
03/02/17	*		152,303	4,067,131	2,395,552	7,955,139	10,350,691	4,219,434	76,204,970	--	9,944
03/03/17	*		153,923	4,068,984	2,399,203	7,959,596	10,358,799	4,222,907	76,214,103	--	9,944
03/04/17	*		155,542	4,070,838	2,402,855	7,964,053	10,366,908	4,226,380	76,223,237	--	9,944
03/05/17	*		157,162	4,072,692	2,406,507	7,968,510	10,375,017	4,229,854	76,232,371	--	9,944
03/06/17	*		158,781	4,074,545	2,410,159	7,972,967	10,383,125	4,233,327	76,241,504	--	9,944
03/07/17	*		160,401	4,076,399	2,413,810	7,977,423	10,391,234	4,236,800	76,250,638	--	9,944
03/08/17	Technician	1	161,638	4,077,815	2,416,600	7,980,828	10,397,428	4,239,453	76,257,615	--	9,944
03/09/17	Off line		161,638	4,077,815	2,416,600	7,980,828	10,397,428	4,239,453	76,257,615	--	9,944
03/10/17	Off line		161,638	4,077,815	2,416,600	7,980,828	10,397,428	4,239,453	76,257,615	--	9,944
03/11/17	Off line		161,638	4,077,815	2,416,600	7,980,828	10,397,428	4,239,453	76,257,615	--	9,944
03/12/17	Off line		161,638	4,077,815	2,416,600	7,980,828	10,397,428	4,239,453	76,257,615	--	9,944
03/13/17	Off line		161,638	4,077,815	2,416,600	7,980,828	10,397,428	4,239,453	76,257,615	--	9,944
03/14/17	Off line		161,638	4,077,815	2,416,600	7,980,828	10,397,428	4,239,453	76,257,615	--	9,944
03/15/17	Technician	2,3	161,638	4,077,815	2,416,600	7,980,828	10,397,428	4,239,453	76,257,615	68	9,944
03/16/17	*		162,803	4,078,898	2,419,270	7,983,859	10,403,128	4,241,702	76,263,749	--	9,944
03/17/17	Technician		164,066	4,080,072	2,422,162	7,987,142	10,409,304	4,244,138	76,270,395	--	9,944
03/18/17	*		164,757	4,080,663	2,423,825	7,988,654	10,412,480	4,245,419	76,273,704	--	9,944
03/19/17	*		165,448	4,081,253	2,425,489	7,990,167	10,415,655	4,246,701	76,277,012	--	9,944
03/20/17	*		166,139	4,081,844	2,427,152	7,991,679	10,418,831	4,247,982	76,280,321	--	9,944
03/21/17	*		166,830	4,082,434	2,428,815	7,993,191	10,422,006	4,249,264	76,283,630	--	9,944
03/22/17	*		167,521	4,083,025	2,430,479	7,994,703	10,425,182	4,250,545	76,286,939	--	9,944
03/23/17	*		168,212	4,083,615	2,432,142	7,996,216	10,428,358	4,251,827	76,290,247	--	9,944
03/24/17	*		168,903	4,084,206	2,433,805	7,997,728	10,431,533	4,253,108	76,293,556	--	9,944
03/25/17	*		169,594	4,084,796	2,435,468	7,999,240	10,434,709	4,254,390	76,296,865	--	9,944
03/26/17	*		170,285	4,085,387	2,437,132	8,000,753	10,437,884	4,255,671	76,300,174	--	9,944
03/27/17	Technician	4	171,062	4,086,051	2,439,003	8,002,454	10,441,457	4,257,113	76,303,896	--	9,944
03/28/17	*		172,189	4,087,297	2,439,003	8,002,454	10,441,457	4,259,486	76,305,992	--	9,944
03/29/17	*		173,316	4,088,544	2,439,003	8,002,454	10,441,457	4,261,860	76,308,089	--	9,944
03/30/17	*		174,443	4,089,790	2,439,003	8,002,454	10,441,457	4,264,233	76,310,185	--	9,944
03/31/17	Technician	5,6	175,370	4,090,816	2,439,003	8,002,454	10,441,457	4,266,186	76,311,910	--	9,944

Cumulative Groundwater Discharged by the GWETS (gallons)							
Period	March	Quarter 1, 2017	Quarter 2, 2017	Quarter 3, 2017	Quarter 4, 2017	2017 to Date	April 1996 to Date
Volume	122,848	467,663	--	--	--	467,663	76,311,910

Cumulative Mass DRO Removed by the GWETS ^A (lb)			
Period	March	Quarter 1 to Date	April 1996 to Date
Mass	0.09	0.60	9,944.4

$$Liquid-Phase\ DRO\ Mass\ [lb] = \left(Conc. \left[\frac{\mu g}{L} \right] \right) \cdot \left(\frac{3.785\ L}{gal} \right) \cdot \left(\frac{1\ g}{1,000,000\ \mu g} \right) \cdot \left(\frac{1\ lb}{453.59\ g} \right) \cdot (Volume\ [gal])$$

Legend / Notes:

- 1 = GWETS manually shutdown for media change out work.
- 2 = GWETS restarted.
- 3 = Collected monthly influent, intermediate, and effluent samples for laboratory analysis.
- 4 = GW-15 and GW-16 manually shutdown to conduct repair work.
- 5 = GW-15 and GW-16 restarted following completion of repair work.
- 6 = Collected quarterly effluent samples for laboratory analysis.

GWETS = Groundwater extraction and treatment system lb = Pounds
 µg/L - Micrograms per liter DRO = Diesel range organics

^A = Hydrocarbon removal is calculated using analytical laboratory results for DRO (if not detected, half the detection limit is used) from sample collected on: 03/15/17 (laboratory report attached).

-- = Not applicable

* = Operational values interpolated from chart recorder data or previous monitoring event.

Groundwater extraction wells on line this month: GW-2, GW-13, GW-15, GW-16

APPENDIX A
Laboratory Analytical Reports and Chain-of-Custody Documents



9765 Eton Avenue
Chatsworth
California 91311
Tel: (818) 998-5547
Fax: (818) 998-7258

January 23, 2017

Neil Irish

The Source Group, Inc. (SH)
1962 Freeman Ave.
Signal Hill, CA 90755

**Re : DFSP Norwalk GWETS NPDES Monthly / 04-NDLA-013
A5332028 / 7A09016**

Enclosed is an analytical report for the above-referenced project. The samples included in this report were received on 01/09/17 14:34 and analyzed in accordance with the attached chain-of-custody.

Unless otherwise noted, all analytical testing was accomplished in accordance with the guidelines established in our Quality Assurance Program Manual, applicable standard operating procedures, and other related documentation. The results in this analytical report are limited to the samples tested and any reproduction thereof must be made in its entirety.

If you have any questions regarding this report or require additional information please call me at American Analytics.

Sincerely,

Viorel Vasile
Operations Manager



LABORATORY ANALYSIS RESULTS

Client: The Source Group, Inc. (SH)
Project No: 04-NDLA-013
Project Name: DFSP Norwalk GWETS NPDES Monthly

AA Project No: A5332028
Date Received: 01/09/17
Date Reported: 01/23/17

Sample ID	Laboratory ID	Matrix	TAT	Date Sampled	Date Received
-----------	---------------	--------	-----	--------------	---------------

8260B TPHGASOLINEBTEXOXY

Effluent	7A09016-01	Water	5	01/09/17 09:27	01/09/17 14:34
----------	------------	-------	---	----------------	----------------

Arsenic Total EPA 200.7

Effluent	7A09016-01	Water	5	01/09/17 09:27	01/09/17 14:34
----------	------------	-------	---	----------------	----------------

Diesel Range Organics 8015M

Effluent	7A09016-01	Water	5	01/09/17 09:27	01/09/17 14:34
----------	------------	-------	---	----------------	----------------

Viorel Vasile
Operations Manager

**LABORATORY ANALYSIS RESULTS**

Client: The Source Group, Inc. (SH)
Project No: 04-NDLA-013
Project Name: DFSP Norwalk GWETS NPDES Monthly
Method: TPHG/BTEX/Oxygenates by GC/MS

AA Project No: A5332028
Date Received: 01/09/17
Date Reported: 01/23/17
Units: ug/L

Date Sampled:	01/09/17		
Date Prepared:	01/10/17		
Date Analyzed:	01/10/17		
AA ID No:	7A09016-01		
Client ID No:	Effluent		
Matrix:	Water		
Dilution Factor:	1	MDL	MRL

8260B TPHGASOLINEBTEXOXY (EPA 8260B)

tert-Butyl alcohol (TBA)	<7.0	7.0	10
Gasoline Range Organics (GRO)	<40	40	100
Methyl-tert-Butyl Ether (MTBE)	<0.40	0.40	2.0

Surrogates

		<u>%REC Limits</u>	
4-Bromofluorobenzene	97%	70-140	
Dibromofluoromethane	113%	70-140	
Toluene-d8	96%	70-140	

Viorel Vasile
Operations Manager

**LABORATORY ANALYSIS RESULTS**

Client: The Source Group, Inc. (SH)
Project No: 04-NDLA-013
Project Name: DFSP Norwalk GWETS NPDES Monthly
Method: Diesel Range Organics by GC/FID

AA Project No: A5332028
Date Received: 01/09/17
Date Reported: 01/23/17
Units: ug/L

Date Sampled:	01/09/17		
Date Prepared:	01/10/17		
Date Analyzed:	01/10/17		
AA ID No:	7A09016-01		
Client ID No:	Effluent		
Matrix:	Water		
Dilution Factor:	1	MDL	MRL

Diesel Range Organics 8015M (EPA 8015M)

Diesel Range Organics as Diesel	<60	60	100
---------------------------------	-----	----	-----

Surrogates

o-Terphenyl	107%	<u>%REC Limits</u>	50-150
-------------	------	---------------------------	--------

Viorel Vasile
Operations Manager



LABORATORY ANALYSIS RESULTS

Client: The Source Group, Inc. (SH)
Project No: 04-NDLA-013
Project Name: DFSP Norwalk GWETS NPDES Monthly
Method: Total Metals by ICP Atomic Emission Spectroscopy

AA Project No: A5332028
Date Received: 01/09/17
Date Reported: 01/23/17

AA I.D. No.	Client I.D. No.	Sampled	Prepared	Analyzed	Dilution	Result	Units	MDL	MRL
<u>Arsenic Total EPA 200.7 (EPA 200.7)</u>									
7A09016-01	Effluent	01/09/17	01/12/17	01/13/17	1	0.017	mg/L	0.006	0.007

Viorel Vasile
Operations Manager



LABORATORY ANALYSIS RESULTS

Client: The Source Group, Inc. (SH)
Project No: 04-NDLA-013
Project Name: DFSP Norwalk GWETS NPDES Monthly

AA Project No: A5332028
Date Received: 01/09/17
Date Reported: 01/23/17

Analyte	Reporting Result	Limit	Units	Spike Level	Source Result	%REC	%REC Limits	RPD	RPD Limit	Notes
---------	------------------	-------	-------	-------------	---------------	------	-------------	-----	-----------	-------

TPHG/BTEX/Oxygenates by GC/MS - Quality Control

Batch B7A1028 - EPA 5030B

Blank (B7A1028-BLK1)

Prepared & Analyzed: 01/10/17

tert-Amyl Methyl Ether (TAME)	<0.30	0.30	ug/L
Benzene	<0.20	0.20	ug/L
tert-Butyl alcohol (TBA)	<7.0	7.0	ug/L
Diisopropyl ether (DIPE)	<0.50	0.50	ug/L
Ethylbenzene	<0.20	0.20	ug/L
Ethyl-tert-Butyl Ether (ETBE)	<0.40	0.40	ug/L
Gasoline Range Organics (GRO)	<40	40	ug/L
Methyl-tert-Butyl Ether (MTBE)	<0.40	0.40	ug/L
Toluene	<0.30	0.30	ug/L
o-Xylene	<0.30	0.30	ug/L
m,p-Xylenes	<0.40	0.40	ug/L

Surrogate: 4-Bromofluorobenzene	48.4		ug/L	50	96.8	70-140
Surrogate: Dibromofluoromethane	56.3		ug/L	50	113	70-140
Surrogate: Toluene-d8	47.6		ug/L	50	95.2	70-140

LCS (B7A1028-BS1)

Prepared: 01/10/17 Analyzed: 01/11/17

tert-Amyl Methyl Ether (TAME)	20.3	0.30	ug/L	20	101	70-130
Benzene	20.3	0.20	ug/L	20	101	75-125
tert-Butyl alcohol (TBA)	116	7.0	ug/L	100	116	70-130
Diisopropyl ether (DIPE)	19.6	0.50	ug/L	20	97.8	70-130
Ethylbenzene	22.1	0.20	ug/L	20	110	75-125
Ethyl-tert-Butyl Ether (ETBE)	20.1	0.40	ug/L	20	100	70-130
Gasoline Range Organics (GRO)	502	40	ug/L	500	100	70-130
Methyl-tert-Butyl Ether (MTBE)	40.9	0.40	ug/L	40	102	70-135
Toluene	21.4	0.30	ug/L	20	107	75-125
o-Xylene	21.5	0.30	ug/L	20	108	75-125
m,p-Xylenes	43.6	0.40	ug/L	40	109	70-130

Surrogate: 4-Bromofluorobenzene	49.2		ug/L	50	98.5	70-140
Surrogate: Dibromofluoromethane	47.2		ug/L	50	94.3	70-140
Surrogate: Toluene-d8	49.2		ug/L	50	98.3	70-140

Matrix Spike (B7A1028-MS1) Source: 7A09021-01 Prepared & Analyzed: 01/10/17

Viorel Vasile
Operations Manager



LABORATORY ANALYSIS RESULTS

Client: The Source Group, Inc. (SH)
Project No: 04-NDLA-013
Project Name: DFSP Norwalk GWETS NPDES Monthly

AA Project No: A5332028
Date Received: 01/09/17
Date Reported: 01/23/17

Table with 11 columns: Analyte, Reporting Result, Reporting Limit, Units, Spike Level, Source Result, %REC, %REC Limits, RPD, RPD Limit, Notes

TPHG/BTEX/Oxygenates by GC/MS - Quality Control

Batch B7A1028 - EPA 5030B

Matrix Spike (B7A1028-MS1) Continued Source: 7A09021-01 Prepared & Analyzed: 01/10/17

Table listing analytes like tert-Amyl Methyl Ether (TAME), Benzene, tert-Butyl alcohol (TBA) with their respective results and limits.

Table listing surrogate analytes: 4-Bromofluorobenzene, Dibromofluoromethane, Toluene-d8 with their results and limits.

Matrix Spike Dup (B7A1028-MSD1) Source: 7A09021-01 Prepared & Analyzed: 01/10/17

Table listing analytes like tert-Amyl Methyl Ether (TAME), Benzene, tert-Butyl alcohol (TBA) with their respective results and limits.

Table listing surrogate analytes: 4-Bromofluorobenzene, Dibromofluoromethane, Toluene-d8 with their results and limits.

Diesel Range Organics by GC/FID - Quality Control

Batch B7A1029 - EPA 3510C

Blank (B7A1029-BLK1)

Prepared & Analyzed: 01/10/17

Handwritten signature

Viorel Vasile
Operations Manager



LABORATORY ANALYSIS RESULTS

Client: The Source Group, Inc. (SH)
Project No: 04-NDLA-013
Project Name: DFSP Norwalk GWETS NPDES Monthly

AA Project No: A5332028
Date Received: 01/09/17
Date Reported: 01/23/17

Analyte	Reporting Result	Limit	Units	Spike Level	Source Result	%REC %REC Limits	RPD RPD	RPD Limit	Notes
Diesel Range Organics by GC/FID - Quality Control									
<i>Batch B7A1029 - EPA 3510C</i>									
Blank (B7A1029-BLK1) Continued				Prepared & Analyzed: 01/10/17					
Diesel Range Organics as Diesel	<60	60	ug/L						
Surrogate: o-Terphenyl	46.0		ug/L	40		115 50-150			
LCS (B7A1029-BS1)				Prepared & Analyzed: 01/10/17					
Diesel Range Organics as Diesel	984	60	ug/L	800		123 75-125		30	
Surrogate: o-Terphenyl	49.4		ug/L	40		124 50-150			
LCS Dup (B7A1029-BSD1)				Prepared & Analyzed: 01/10/17					
Diesel Range Organics as Diesel	976	60	ug/L	800		122 75-125	0.857	30	
Surrogate: o-Terphenyl	49.4		ug/L	40		123 50-150			
Total Metals by ICP Atomic Emission Spectroscopy - Quality Control									
<i>Batch B7A1218 - EPA 200.7</i>									
Blank (B7A1218-BLK1)				Prepared: 01/12/17 Analyzed: 01/13/17					
Arsenic	<0.0060	0.0060	mg/L						
LCS (B7A1218-BS1)				Prepared: 01/12/17 Analyzed: 01/13/17					
Arsenic	0.216	0.0060	mg/L	0.20		108 80-120		20	
LCS Dup (B7A1218-BSD1)				Prepared: 01/12/17 Analyzed: 01/13/17					
Arsenic	0.216	0.0060	mg/L	0.20		108 80-120	0.185	20	
Duplicate (B7A1218-DUP1)				Source: 7A09017-05 Prepared: 01/12/17 Analyzed: 01/13/17					
Arsenic	0.0180	0.0060	mg/L		0.0156			14.3	30
Matrix Spike (B7A1218-MS1)				Source: 7A09016-01 Prepared: 01/12/17 Analyzed: 01/13/17					
Arsenic	0.221	0.0060	mg/L	0.20	0.0168	102 75-125		20	
Matrix Spike Dup (B7A1218-MSD1)				Source: 7A09016-01 Prepared: 01/12/17 Analyzed: 01/13/17					
Arsenic	0.205	0.0060	mg/L	0.20	0.0168	94.2 75-125	7.50	20	

Viorel Vasile
 Operations Manager



LABORATORY ANALYSIS RESULTS

Client: The Source Group, Inc. (SH)
Project No: 04-NDLA-013
Project Name: DFSP Norwalk GWETS NPDES Monthly

AA Project No: A5332028
Date Received: 01/09/17
Date Reported: 01/23/17

Special Notes

Viorel Vasile
Operations Manager



9765 Eton Avenue
Chatsworth
California 91311
Tel: (818) 998-5547
Fax: (818) 998-7258

February 15, 2017

Neil Irish

The Source Group, Inc. (SH)
1962 Freeman Ave.
Signal Hill, CA 90755

**Re : DFSP Norwalk GWETS NPDES Monthly / 04-NDLA-013
A5332051 / 7B06016**

Enclosed is an analytical report for the above-referenced project. The samples included in this report were received on 02/06/17 15:35 and analyzed in accordance with the attached chain-of-custody.

Unless otherwise noted, all analytical testing was accomplished in accordance with the guidelines established in our Quality Assurance Program Manual, applicable standard operating procedures, and other related documentation. The results in this analytical report are limited to the samples tested and any reproduction thereof must be made in its entirety.

If you have any questions regarding this report or require additional information please call me at American Analytics.

Sincerely,

Viorel Vasile
Operations Manager

**LABORATORY ANALYSIS RESULTS**

Client: The Source Group, Inc. (SH)
Project No: 04-NDLA-013
Project Name: DFSP Norwalk GWETS NPDES Monthly

AA Project No: A5332051
Date Received: 02/06/17
Date Reported: 02/15/17

Sample ID	Laboratory ID	Matrix	TAT	Date Sampled	Date Received
-----------	---------------	--------	-----	--------------	---------------

8260B TPHGASOLINEBTEXOXY

Effluent	7B06016-01	Water	5	02/06/17 11:00	02/06/17 15:35
----------	------------	-------	---	----------------	----------------

Arsenic Total EPA 200.7

Effluent	7B06016-01	Water	5	02/06/17 11:00	02/06/17 15:35
----------	------------	-------	---	----------------	----------------

Diesel Range Organics 8015M

Effluent	7B06016-01	Water	5	02/06/17 11:00	02/06/17 15:35
----------	------------	-------	---	----------------	----------------

Viorel Vasile
Operations Manager

**LABORATORY ANALYSIS RESULTS**

Client: The Source Group, Inc. (SH)
Project No: 04-NDLA-013
Project Name: DFSP Norwalk GWETS NPDES Monthly
Method: TPHG/BTEX/Oxygenates by GC/MS

AA Project No: A5332051
Date Received: 02/06/17
Date Reported: 02/15/17
Units: ug/L

Date Sampled:	02/06/17		
Date Prepared:	02/07/17		
Date Analyzed:	02/07/17		
AA ID No:	7B06016-01		
Client ID No:	Effluent		
Matrix:	Water		
Dilution Factor:	1	MDL	MRL

8260B TPHGASOLINEBTEXOXY (EPA 8260B)

tert-Butyl alcohol (TBA)	<7.0	7.0	10
Gasoline Range Organics (GRO)	<40	40	100
Methyl-tert-Butyl Ether (MTBE)	<0.40	0.40	2.0

Surrogates

		<u>%REC Limits</u>	
4-Bromofluorobenzene	92%	70-140	
Dibromofluoromethane	100%	70-140	
Toluene-d8	95%	70-140	

Viorel Vasile
Operations Manager

**LABORATORY ANALYSIS RESULTS**

Client: The Source Group, Inc. (SH)
Project No: 04-NDLA-013
Project Name: DFSP Norwalk GWETS NPDES Monthly
Method: Diesel Range Organics by GC/FID

AA Project No: A5332051
Date Received: 02/06/17
Date Reported: 02/15/17
Units: ug/L

Date Sampled:	02/06/17		
Date Prepared:	02/10/17		
Date Analyzed:	02/10/17		
AA ID No:	7B06016-01		
Client ID No:	Effluent		
Matrix:	Water		
Dilution Factor:	1	MDL	MRL

Diesel Range Organics 8015M (EPA 8015M)

Diesel Range Organics as Diesel	<60	60	100
---------------------------------	-----	----	-----

Surrogates

o-Terphenyl	118%	<u>%REC Limits</u>
		50-150

Viorel Vasile
Operations Manager



LABORATORY ANALYSIS RESULTS

Client: The Source Group, Inc. (SH) **AA Project No:** A5332051
Project No: 04-NDLA-013 **Date Received:** 02/06/17
Project Name: DFSP Norwalk GWETS NPDES Monthly **Date Reported:** 02/15/17
Method: Total Metals by ICP Atomic Emission Spectroscopy

AA I.D. No.	Client I.D. No.	Sampled	Prepared	Analyzed	Dilution	Result	Units	MDL	MRL
<u>Arsenic Total EPA 200.7 (EPA 200.7)</u>									
7B06016-01	Effluent	02/06/17	02/09/17	02/13/17	1	<0.0060	mg/L	0.006	0.007

Viorel Vasile
Operations Manager



LABORATORY ANALYSIS RESULTS

Client: The Source Group, Inc. (SH)
Project No: 04-NDLA-013
Project Name: DFSP Norwalk GWETS NPDES Monthly

AA Project No: A5332051
Date Received: 02/06/17
Date Reported: 02/15/17

Analyte	Reporting Result	Reporting Limit	Units	Spike Level	Source Result	%REC %REC	%REC Limits	RPD RPD	RPD Limit	Notes
---------	------------------	-----------------	-------	-------------	---------------	-----------	-------------	---------	-----------	-------

TPHG/BTEX/Oxygenates by GC/MS - Quality Control

Batch B7B0718 - EPA 5030B

Blank (B7B0718-BLK1)

Prepared & Analyzed: 02/07/17

tert-Amyl Methyl Ether (TAME)	<0.30	0.30	ug/L							
Benzene	<0.20	0.20	ug/L							
tert-Butyl alcohol (TBA)	<7.0	7.0	ug/L							
Diisopropyl ether (DIPE)	<0.50	0.50	ug/L							
Ethylbenzene	<0.20	0.20	ug/L							
Ethyl-tert-Butyl Ether (ETBE)	<0.40	0.40	ug/L							
Gasoline Range Organics (GRO)	<40	40	ug/L							
Methyl-tert-Butyl Ether (MTBE)	<0.40	0.40	ug/L							
Toluene	<0.30	0.30	ug/L							
o-Xylene	<0.30	0.30	ug/L							
m,p-Xylenes	<0.40	0.40	ug/L							

Surrogate: 4-Bromofluorobenzene	46.0		ug/L	50		92.0	70-140			
Surrogate: Dibromofluoromethane	53.1		ug/L	50		106	70-140			
Surrogate: Toluene-d8	47.7		ug/L	50		95.4	70-140			

LCS (B7B0718-BS1)

Prepared & Analyzed: 02/07/17

tert-Amyl Methyl Ether (TAME)	16.4	0.30	ug/L	20		81.8	70-130			
Benzene	18.2	0.20	ug/L	20		91.0	75-125			
tert-Butyl alcohol (TBA)	107	7.0	ug/L	100		107	70-130			
Diisopropyl ether (DIPE)	17.1	0.50	ug/L	20		85.7	70-130			
Ethylbenzene	21.1	0.20	ug/L	20		106	75-125			
Ethyl-tert-Butyl Ether (ETBE)	16.5	0.40	ug/L	20		82.5	70-130			
Gasoline Range Organics (GRO)	500	40	ug/L	500		100	70-130			
Methyl-tert-Butyl Ether (MTBE)	42.2	0.40	ug/L	40		106	70-135			
Toluene	20.3	0.30	ug/L	20		102	75-125			
o-Xylene	21.5	0.30	ug/L	20		108	75-125			
m,p-Xylenes	43.4	0.40	ug/L	40		108	70-130			

Surrogate: 4-Bromofluorobenzene	46.3		ug/L	50		92.6	70-140			
Surrogate: Dibromofluoromethane	44.2		ug/L	50		88.4	70-140			
Surrogate: Toluene-d8	49.1		ug/L	50		98.1	70-140			

Matrix Spike (B7B0718-MS1)

Source: 7B03007-09 Prepared & Analyzed: 02/07/17

Viorel Vasile
 Operations Manager



LABORATORY ANALYSIS RESULTS

Client: The Source Group, Inc. (SH)
Project No: 04-NDLA-013
Project Name: DFSP Norwalk GWETS NPDES Monthly

AA Project No: A5332051
Date Received: 02/06/17
Date Reported: 02/15/17

Analyte	Reporting Result	Limit	Units	Spike Level	Source Result	%REC %REC	%REC Limits	RPD RPD	RPD Limit	Notes
---------	------------------	-------	-------	-------------	---------------	-----------	-------------	---------	-----------	-------

TPHG/BTEX/Oxygenates by GC/MS - Quality Control

Batch B7B0718 - EPA 5030B

Matrix Spike (B7B0718-MS1) Continued Source: 7B03007-09 Prepared & Analyzed: 02/07/17

tert-Amyl Methyl Ether (TAME)	18.1	0.30	ug/L	20		90.5	70-130			
Benzene	18.2	0.20	ug/L	20		91.2	70-130			
tert-Butyl alcohol (TBA)	123	7.0	ug/L	100		123	70-130			
Diisopropyl ether (DIPE)	17.7	0.50	ug/L	20		88.6	70-130			
Ethylbenzene	22.0	0.20	ug/L	20		110	70-130			
Ethyl-tert-Butyl Ether (ETBE)	17.6	0.40	ug/L	20		88.2	70-130			
Methyl-tert-Butyl Ether (MTBE)	41.5	0.40	ug/L	40		104	70-130			
Toluene	21.2	0.30	ug/L	20		106	70-130			
o-Xylene	22.4	0.30	ug/L	20		112	70-130			
m,p-Xylenes	44.6	0.40	ug/L	40	0.860	109	70-130			

Surrogate: 4-Bromofluorobenzene	45.1		ug/L	50		90.2	70-140			
Surrogate: Dibromofluoromethane	44.7		ug/L	50		89.3	70-140			
Surrogate: Toluene-d8	48.2		ug/L	50		96.4	70-140			

Matrix Spike Dup (B7B0718-MSD1) Source: 7B03007-09 Prepared & Analyzed: 02/07/17

tert-Amyl Methyl Ether (TAME)	19.1	0.30	ug/L	20		95.4	70-130	5.27	30	
Benzene	18.2	0.20	ug/L	20		91.2	70-130	0.0548	30	
tert-Butyl alcohol (TBA)	129	7.0	ug/L	100		129	70-130	4.76	30	
Diisopropyl ether (DIPE)	17.8	0.50	ug/L	20		89.2	70-130	0.675	30	
Ethylbenzene	22.2	0.20	ug/L	20		111	70-130	0.906	30	
Ethyl-tert-Butyl Ether (ETBE)	17.9	0.40	ug/L	20		89.4	70-130	1.30	30	
Methyl-tert-Butyl Ether (MTBE)	44.2	0.40	ug/L	40		110	70-130	6.19	30	
Toluene	21.2	0.30	ug/L	20		106	70-130	0.0472	30	
o-Xylene	22.9	0.30	ug/L	20		115	70-130	2.25	30	
m,p-Xylenes	45.0	0.40	ug/L	40	0.860	110	70-130	0.915	30	

Surrogate: 4-Bromofluorobenzene	45.5		ug/L	50		91.1	70-140			
Surrogate: Dibromofluoromethane	44.7		ug/L	50		89.4	70-140			
Surrogate: Toluene-d8	46.5		ug/L	50		93.1	70-140			

Diesel Range Organics by GC/FID - Quality Control

Batch B7B1002 - EPA 3510C

Blank (B7B1002-BLK1)

Prepared & Analyzed: 02/10/17

Viorel Vasile
Operations Manager



LABORATORY ANALYSIS RESULTS

Client: The Source Group, Inc. (SH)
Project No: 04-NDLA-013
Project Name: DFSP Norwalk GWETS NPDES Monthly

AA Project No: A5332051
Date Received: 02/06/17
Date Reported: 02/15/17

Analyte	Reporting Result	Limit	Units	Spike Level	Source Result	%REC %REC Limits	RPD	RPD Limit	Notes
Diesel Range Organics by GC/FID - Quality Control									
<i>Batch B7B1002 - EPA 3510C</i>									
Blank (B7B1002-BLK1) Continued				Prepared & Analyzed: 02/10/17					
Diesel Range Organics as Diesel	<60	60	ug/L						
Surrogate: o-Terphenyl	51.4		ug/L	40		128 50-150			
LCS (B7B1002-BS1)				Prepared & Analyzed: 02/10/17					
Diesel Range Organics as Diesel	744	60	ug/L	800		93.0 75-125		30	
Surrogate: o-Terphenyl	55.0		ug/L	40		138 50-150			
LCS Dup (B7B1002-BSD1)				Prepared & Analyzed: 02/10/17					
Diesel Range Organics as Diesel	741	60	ug/L	800		92.6 75-125	0.368	30	
Surrogate: o-Terphenyl	51.5		ug/L	40		129 50-150			
Total Metals by ICP Atomic Emission Spectroscopy - Quality Control									
<i>Batch B7B0922 - EPA 200.7</i>									
Blank (B7B0922-BLK1)				Prepared: 02/09/17 Analyzed: 02/13/17					
Arsenic	<0.0060	0.0060	mg/L						
LCS (B7B0922-BS1)				Prepared: 02/09/17 Analyzed: 02/13/17					
Arsenic	1.02	0.0060	mg/L	1.0		102 80-120		20	
LCS Dup (B7B0922-BSD1)				Prepared: 02/09/17 Analyzed: 02/13/17					
Arsenic	1.04	0.0060	mg/L	1.0		104 80-120	2.23	20	
Duplicate (B7B0922-DUP1)				Source: 7B06017-01 Prepared: 02/09/17 Analyzed: 02/13/17					
Arsenic	0.0268	0.0060	mg/L		0.0280			4.38	30

Viorel Vasile
 Operations Manager



LABORATORY ANALYSIS RESULTS

Client: The Source Group, Inc. (SH)
Project No: 04-NDLA-013
Project Name: DFSP Norwalk GWETS NPDES Monthly

AA Project No: A5332051
Date Received: 02/06/17
Date Reported: 02/15/17

Special Notes

Viorel Vasile
Operations Manager



9765 Eton Avenue
Chatsworth
California 91311
Tel: (818) 998-5547
Fax: (818) 998-7258

March 23, 2017

Neil Irish

The Source Group, Inc. (SH)
1962 Freeman Ave.
Signal Hill, CA 90755

**Re : DFSP Norwalk GWETS NPDES Monthly / 04-NDLA-013
A5332086 / 7C15019**

Enclosed is an analytical report for the above-referenced project. The samples included in this report were received on 03/15/17 16:08 and analyzed in accordance with the attached chain-of-custody.

Unless otherwise noted, all analytical testing was accomplished in accordance with the guidelines established in our Quality Assurance Program Manual, applicable standard operating procedures, and other related documentation. The results in this analytical report are limited to the samples tested and any reproduction thereof must be made in its entirety.

If you have any questions regarding this report or require additional information please call me at American Analytics.

Sincerely,

Viorel Vasile
Operations Manager

**LABORATORY ANALYSIS RESULTS**

Client: The Source Group, Inc. (SH)
Project No: 04-NDLA-013
Project Name: DFSP Norwalk GWETS NPDES Monthly

AA Project No: A5332086
Date Received: 03/15/17
Date Reported: 03/23/17

Sample ID	Laboratory ID	Matrix	TAT	Date Sampled	Date Received
-----------	---------------	--------	-----	--------------	---------------

8260B TPHGASOLINEBTEXOXY

Effluent	7C15019-01	Water	5	03/15/17 08:47	03/15/17 16:08
----------	------------	-------	---	----------------	----------------

Arsenic Total EPA 200.7

Effluent	7C15019-01	Water	5	03/15/17 08:47	03/15/17 16:08
----------	------------	-------	---	----------------	----------------

Diesel Range Organics 8015M

Effluent	7C15019-01	Water	5	03/15/17 08:47	03/15/17 16:08
----------	------------	-------	---	----------------	----------------

Viorel Vasile
Operations Manager

**LABORATORY ANALYSIS RESULTS**

Client: The Source Group, Inc. (SH)
Project No: 04-NDLA-013
Project Name: DFSP Norwalk GWETS NPDES Monthly
Method: TPHG/BTEX/Oxygenates by GC/MS

AA Project No: A5332086
Date Received: 03/15/17
Date Reported: 03/23/17
Units: ug/L

Date Sampled:	03/15/17		
Date Prepared:	03/21/17		
Date Analyzed:	03/21/17		
AA ID No:	7C15019-01		
Client ID No:	Effluent		
Matrix:	Water		
Dilution Factor:	1	MDL	MRL

8260B TPHGASOLINEBTEXOXY (EPA 8260B)

tert-Amyl Methyl Ether (TAME)	<0.30	0.30	2.0
Benzene	<0.20	0.20	0.50
tert-Butyl alcohol (TBA)	<7.0	7.0	10
Diisopropyl ether (DIPE)	<0.50	0.50	2.0
Ethylbenzene	<0.20	0.20	0.50
Ethyl-tert-Butyl Ether (ETBE)	<0.40	0.40	2.0
Gasoline Range Organics (GRO)	<40	40	100
Methyl-tert-Butyl Ether (MTBE)	<0.40	0.40	2.0
Toluene	<0.30	0.30	0.50
o-Xylene	<0.30	0.30	0.50
m,p-Xylenes	<0.40	0.40	1.0

Surrogates

		<u>%REC Limits</u>
4-Bromofluorobenzene	94%	70-140
Dibromofluoromethane	115%	70-140
Toluene-d8	100%	70-140

Viorel Vasile
Operations Manager

**LABORATORY ANALYSIS RESULTS**

Client: The Source Group, Inc. (SH)
Project No: 04-NDLA-013
Project Name: DFSP Norwalk GWETS NPDES Monthly
Method: Diesel Range Organics by GC/FID

AA Project No: A5332086
Date Received: 03/15/17
Date Reported: 03/23/17
Units: ug/L

Date Sampled:	03/15/17		
Date Prepared:	03/20/17		
Date Analyzed:	03/20/17		
AA ID No:	7C15019-01		
Client ID No:	Effluent		
Matrix:	Water		
Dilution Factor:	1	MDL	MRL

Diesel Range Organics 8015M (EPA 8015M)

Diesel Range Organics as Diesel	<60	60	100
---------------------------------	-----	----	-----

Surrogates

o-Terphenyl	145%	<u>%REC Limits</u>
		50-150

Viorel Vasile
Operations Manager



LABORATORY ANALYSIS RESULTS

Client: The Source Group, Inc. (SH)
Project No: 04-NDLA-013
Project Name: DFSP Norwalk GWETS NPDES Monthly
Method: Total Metals by ICP Atomic Emission Spectroscopy

AA Project No: A5332086
Date Received: 03/15/17
Date Reported: 03/23/17

AA I.D. No.	Client I.D. No.	Sampled	Prepared	Analyzed	Dilution	Result	Units	MDL	MRL
<u>Arsenic Total EPA 200.7 (EPA 200.7)</u>									
7C15019-01	Effluent	03/15/17	03/21/17	03/22/17	1	<0.0060	mg/L	0.006	0.007

Viorel Vasile
Operations Manager



LABORATORY ANALYSIS RESULTS

Client: The Source Group, Inc. (SH)
Project No: 04-NDLA-013
Project Name: DFSP Norwalk GWETS NPDES Monthly

AA Project No: A5332086
Date Received: 03/15/17
Date Reported: 03/23/17

Analyte	Reporting Result	Limit	Units	Spike Level	Source Result	%REC %REC	Limits	RPD RPD	Limit	Notes
---------	------------------	-------	-------	-------------	---------------	-----------	--------	---------	-------	-------

TPHG/BTEX/Oxygenates by GC/MS - Quality Control

Batch B7C2119 - EPA 5030B

Blank (B7C2119-BLK1)

Prepared & Analyzed: 03/21/17

tert-Amyl Methyl Ether (TAME)	<0.30	0.30	ug/L							
Benzene	<0.20	0.20	ug/L							
tert-Butyl alcohol (TBA)	<7.0	7.0	ug/L							
Diisopropyl ether (DIPE)	<0.50	0.50	ug/L							
Ethylbenzene	<0.20	0.20	ug/L							
Ethyl-tert-Butyl Ether (ETBE)	<0.40	0.40	ug/L							
Gasoline Range Organics (GRO)	<40	40	ug/L							
Methyl-tert-Butyl Ether (MTBE)	<0.40	0.40	ug/L							
Toluene	<0.30	0.30	ug/L							
o-Xylene	<0.30	0.30	ug/L							
m,p-Xylenes	<0.40	0.40	ug/L							

Surrogate: 4-Bromofluorobenzene	47.2		ug/L	50		94.4	70-140			
Surrogate: Dibromofluoromethane	53.1		ug/L	50		106	70-140			
Surrogate: Toluene-d8	48.9		ug/L	50		97.7	70-140			

LCS (B7C2119-BS1)

Prepared & Analyzed: 03/21/17

tert-Amyl Methyl Ether (TAME)	20.9	0.30	ug/L	20		104	70-130			
Benzene	20.6	0.20	ug/L	20		103	75-125			
tert-Butyl alcohol (TBA)	112	7.0	ug/L	100		112	70-130			
Diisopropyl ether (DIPE)	17.7	0.50	ug/L	20		88.6	70-130			
Ethylbenzene	21.8	0.20	ug/L	20		109	75-125			
Ethyl-tert-Butyl Ether (ETBE)	17.4	0.40	ug/L	20		86.8	70-130			
Gasoline Range Organics (GRO)	505	40	ug/L	500		101	70-130			
Methyl-tert-Butyl Ether (MTBE)	45.4	0.40	ug/L	40		113	70-135			
Toluene	21.0	0.30	ug/L	20		105	75-125			
o-Xylene	23.4	0.30	ug/L	20		117	75-125			
m,p-Xylenes	45.6	0.40	ug/L	40		114	70-130			

Surrogate: 4-Bromofluorobenzene	47.5		ug/L	50		95.0	70-140			
Surrogate: Dibromofluoromethane	49.6		ug/L	50		99.2	70-140			
Surrogate: Toluene-d8	49.1		ug/L	50		98.2	70-140			

Diesel Range Organics by GC/FID - Quality Control

Viorel Vasile
Operations Manager



LABORATORY ANALYSIS RESULTS

Client: The Source Group, Inc. (SH)
Project No: 04-NDLA-013
Project Name: DFSP Norwalk GWETS NPDES Monthly

AA Project No: A5332086
Date Received: 03/15/17
Date Reported: 03/23/17

Analyte	Reporting Result	Limit	Units	Spike Level	Source Result	%REC %REC Limits	RPD RPD	RPD Limit	Notes
Diesel Range Organics by GC/FID - Quality Control									
<i>Batch B7C2023 - EPA 3510C</i>									
Blank (B7C2023-BLK1)				Prepared & Analyzed: 03/20/17					
Diesel Range Organics as Diesel	<60	60	ug/L						
Surrogate: o-Terphenyl	60.0		ug/L	40		150 50-150			
LCS (B7C2023-BS1)				Prepared & Analyzed: 03/20/17					
Diesel Range Organics as Diesel	838	60	ug/L	800		105 75-125		30	
Surrogate: o-Terphenyl	58.8		ug/L	40		147 50-150			
LCS Dup (B7C2023-BSD1)				Prepared & Analyzed: 03/20/17					
Diesel Range Organics as Diesel	865	60	ug/L	800		108 75-125	3.18	30	
Surrogate: o-Terphenyl	49.5		ug/L	40		124 50-150			
Total Metals by ICP Atomic Emission Spectroscopy - Quality Control									
<i>Batch B7C2124 - EPA 200.7</i>									
Blank (B7C2124-BLK1)				Prepared: 03/21/17 Analyzed: 03/22/17					
Arsenic	<0.0060	0.0060	mg/L						
LCS (B7C2124-BS1)				Prepared: 03/21/17 Analyzed: 03/22/17					
Arsenic	1.14	0.0060	mg/L	1.0		114 80-120		20	
LCS Dup (B7C2124-BSD1)				Prepared: 03/21/17 Analyzed: 03/22/17					
Arsenic	1.15	0.0060	mg/L	1.0		115 80-120	1.14	20	
Duplicate (B7C2124-DUP1)				Source: 7C15020-04 Prepared: 03/21/17 Analyzed: 03/22/17					
Arsenic	0.0178	0.0060	mg/L		0.0173		2.85	30	
Matrix Spike (B7C2124-MS1)				Source: 7C15019-01 Prepared: 03/21/17 Analyzed: 03/22/17					
Arsenic	1.05	0.0060	mg/L	1.0	<0.0070	105 75-125		20	
Matrix Spike Dup (B7C2124-MSD1)				Source: 7C15019-01 Prepared: 03/21/17 Analyzed: 03/22/17					
Arsenic	1.07	0.0060	mg/L	1.0	<0.0070	107 75-125	2.64	20	

Viorel Vasile
 Operations Manager



LABORATORY ANALYSIS RESULTS

Client: The Source Group, Inc. (SH)
Project No: 04-NDLA-013
Project Name: DFSP Norwalk GWETS NPDES Monthly

AA Project No: A5332086
Date Received: 03/15/17
Date Reported: 03/23/17

Special Notes

Viorel Vasile
Operations Manager



9765 Eton Avenue
Chatsworth
California 91311
Tel: (818) 998-5547
Fax: (818) 998-7258

April 12, 2017

Neil Irish

The Source Group, Inc. (SH)
1962 Freeman Ave.
Signal Hill, CA 90755

**Re : DFSP Norwalk GWETS NPDES Quarterly / 04-NDLA-013
A5332099 / 7C31001**

Enclosed is an analytical report for the above-referenced project. The samples included in this report were received on 03/31/17 10:03 and analyzed in accordance with the attached chain-of-custody.

Unless otherwise noted, all analytical testing was accomplished in accordance with the guidelines established in our Quality Assurance Program Manual, applicable standard operating procedures, and other related documentation. The results in this analytical report are limited to the samples tested and any reproduction thereof must be made in its entirety.

If you have any questions regarding this report or require additional information please call me at American Analytics.

Sincerely,

Viorel Vasile
Operations Manager

**LABORATORY ANALYSIS RESULTS**

Client: The Source Group, Inc. (SH)
Project No: 04-NDLA-013
Project Name: DFSP Norwalk GWETS NPDES Quarterly

AA Project No: A5332099
Date Received: 03/31/17
Date Reported: 04/12/17

Sample ID	Laboratory ID	Matrix	TAT	Date Sampled	Date Received
-----------	---------------	--------	-----	--------------	---------------

8260B TPHGASOLINEBTEXOXY

Effluent	7C31001-01	Water	5	03/31/17 07:59	03/31/17 10:03
Effluent-Dup	7C31001-02	Water	5	03/31/17 08:00	03/31/17 10:03

Arsenic Total EPA 200.7

Effluent	7C31001-01	Water	5	03/31/17 07:59	03/31/17 10:03
----------	------------	-------	---	----------------	----------------

BOD SM5210B

Effluent	7C31001-01	Water	5	03/31/17 07:59	03/31/17 10:03
----------	------------	-------	---	----------------	----------------

Chlorine Residual SM 4500 Cl G

Effluent	7C31001-01	Water	5	03/31/17 07:59	03/31/17 10:03
----------	------------	-------	---	----------------	----------------

Copper Total EPA 200.7

Effluent	7C31001-01	Water	5	03/31/17 07:59	03/31/17 10:03
----------	------------	-------	---	----------------	----------------

Diesel Range Organics 8015M

Effluent	7C31001-01	Water	5	03/31/17 07:59	03/31/17 10:03
Effluent-Dup	7C31001-02	Water	5	03/31/17 08:00	03/31/17 10:03

HEM Oil and Grease 1664

Effluent	7C31001-01	Water	5	03/31/17 07:59	03/31/17 10:03
----------	------------	-------	---	----------------	----------------

Viorel Vasile
Operations Manager

**LABORATORY ANALYSIS RESULTS**

Client: The Source Group, Inc. (SH)
Project No: 04-NDLA-013
Project Name: DFSP Norwalk GWETS NPDES Quarterly

AA Project No: A5332099
Date Received: 03/31/17
Date Reported: 04/12/17

Sample ID	Laboratory ID	Matrix	TAT	Date Sampled	Date Received
-----------	---------------	--------	-----	--------------	---------------

MBAS SM5540C

Effluent	7C31001-01	Water	5	03/31/17 07:59	03/31/17 10:03
----------	------------	-------	---	----------------	----------------

Phenols 420.1

Effluent	7C31001-01	Water	5	03/31/17 07:59	03/31/17 10:03
----------	------------	-------	---	----------------	----------------

SS SM2540F

Effluent	7C31001-01	Water	5	03/31/17 07:59	03/31/17 10:03
----------	------------	-------	---	----------------	----------------

Sulfide SM4500-S=D

Effluent	7C31001-01	Water	5	03/31/17 07:59	03/31/17 10:03
----------	------------	-------	---	----------------	----------------

TDS SM2540C

Effluent	7C31001-01	Water	5	03/31/17 07:59	03/31/17 10:03
----------	------------	-------	---	----------------	----------------

TSS SM2540D

Effluent	7C31001-01	Water	5	03/31/17 07:59	03/31/17 10:03
----------	------------	-------	---	----------------	----------------

Turbidity 180.1

Effluent	7C31001-01	Water	5	03/31/17 07:59	03/31/17 10:03
----------	------------	-------	---	----------------	----------------

Viorel Vasile
Operations Manager

**LABORATORY ANALYSIS RESULTS**

Client: The Source Group, Inc. (SH)
Project No: 04-NDLA-013
Project Name: DFSP Norwalk GWETS NPDES Quarterly
Method: General Chemistry Analyses

AA Project No: A5332099
Date Received: 03/31/17
Date Reported: 04/12/17

AA I.D. No.	Client I.D. No.	Sampled	Prepared	Analyzed	Dilution	Result	Units	MDL	MRL
<u>BOD SM5210B (SM5210B) *</u>									
7C31001-01	Effluent	03/31/17	03/31/17	04/05/17	1	<5.0	mg/L	5	5
<u>Chlorine Residual SM 4500 Cl G (EPA 330.3)</u>									
7C31001-01	Effluent	03/31/17	03/31/17	03/31/17	1	<0.50	mg/L	0.1	0.5
<u>HEM Oil and Grease 1664 (EPA 1664)</u>									
7C31001-01	Effluent	03/31/17	03/31/17	03/31/17	1	<5.0	mg/L	5	10
<u>MBAS SM5540C (SM5540C) *</u>									
7C31001-01	Effluent	03/31/17	03/31/17	03/31/17	1	<0.050	mg/L	0.05	0.05
<u>Phenols 420.1 (EPA 420.1) *</u>									
7C31001-01	Effluent	03/31/17	03/31/17	04/03/17	1	<0.15	mg/L	0.15	0.3
<u>SS SM2540F (SM2540F)</u>									
7C31001-01	Effluent	03/31/17	03/31/17	03/31/17	1	<0.100	mL/L	0.1	0.1
<u>Sulfide SM4500-S=D (SM4500-S=D)</u>									
7C31001-01	Effluent	03/31/17	03/31/17	03/31/17	1	<0.027	mg/L	0.027	0.05
<u>TDS SM2540C (SM2540C)</u>									
7C31001-01	Effluent	03/31/17	04/03/17	04/04/17	1	<6.2	mg/L	6.2	10
<u>TSS SM2540D (SM2540D)</u>									
7C31001-01	Effluent	03/31/17	03/31/17	03/31/17	1	<5.0	mg/L	5	10
<u>Turbidity 180.1 (EPA 180.1)</u>									
7C31001-01	Effluent	03/31/17	03/31/17	03/31/17	1	1.0	NTU	0.168	1

Viorel Vasile
Operations Manager



LABORATORY ANALYSIS RESULTS

Client: The Source Group, Inc. (SH)
Project No: 04-NDLA-013
Project Name: DFSP Norwalk GWETS NPDES Quarterly
Method: TPHG/BTEX/Oxygenates by GC/MS

AA Project No: A5332099
Date Received: 03/31/17
Date Reported: 04/12/17
Units: ug/L

Date Sampled:	03/31/17	03/31/17		
Date Prepared:	04/11/17	04/11/17		
Date Analyzed:	04/11/17	04/11/17		
AA ID No:	7C31001-01	7C31001-02		
Client ID No:	Effluent	Effluent-Dup		
Matrix:	Water	Water		
Dilution Factor:	1	1	MDL	MRL

8260B TPHGASOLINEBTEXOXY (EPA 8260B)

tert-Amyl Methyl Ether (TAME)	<0.30	<0.30	0.30	2.0
Benzene	<0.20	<0.20	0.20	0.50
tert-Butyl alcohol (TBA)	<7.0	<7.0	7.0	10
Diisopropyl ether (DIPE)	<0.50	<0.50	0.50	2.0
Ethylbenzene	<0.20	<0.20	0.20	0.50
Ethyl-tert-Butyl Ether (ETBE)	<0.40	<0.40	0.40	2.0
Gasoline Range Organics (GRO)	<40	<40	40	100
Methyl-tert-Butyl Ether (MTBE)	<0.40	<0.40	0.40	2.0
Toluene	<0.30	<0.30	0.30	0.50
o-Xylene	<0.30	<0.30	0.30	0.50
m,p-Xylenes	<0.40	<0.40	0.40	1.0

Surrogates

			<u>%REC Limits</u>
4-Bromofluorobenzene	95%	100%	70-140
Dibromofluoromethane	75%	74%	70-140
Toluene-d8	118%	119%	70-140

Viorel Vasile
 Operations Manager

**LABORATORY ANALYSIS RESULTS**

Client: The Source Group, Inc. (SH)
Project No: 04-NDLA-013
Project Name: DFSP Norwalk GWETS NPDES Quarterly
Method: Diesel Range Organics by GC/FID

AA Project No: A5332099
Date Received: 03/31/17
Date Reported: 04/12/17
Units: ug/L

Date Sampled:	03/31/17	03/31/17		
Date Prepared:	04/03/17	04/03/17		
Date Analyzed:	04/03/17	04/03/17		
AA ID No:	7C31001-01	7C31001-02		
Client ID No:	Effluent	Effluent-Dup		
Matrix:	Water	Water		
Dilution Factor:	1	1	MDL	MRL

Diesel Range Organics 8015M (EPA 8015M)

Diesel Range Organics as Diesel	<60	<60	60	100
---------------------------------	-----	-----	----	-----

Surrogates

o-Terphenyl	98%	77%	<u>%REC Limits</u>	50-150
-------------	-----	-----	---------------------------	--------

Viorel Vasile
Operations Manager



LABORATORY ANALYSIS RESULTS

Client: The Source Group, Inc. (SH)
Project No: 04-NDLA-013
Project Name: DFSP Norwalk GWETS NPDES Quarterly
Method: Total Metals by ICP Atomic Emission Spectroscopy

AA Project No: A5332099
Date Received: 03/31/17
Date Reported: 04/12/17

AA I.D. No.	Client I.D. No.	Sampled	Prepared	Analyzed	Dilution	Result	Units	MDL	MRL
<u>Arsenic Total EPA 200.7 (EPA 200.7)</u>									
7C31001-01	Effluent	03/31/17	04/04/17	04/06/17	1	<0.0060	mg/L	0.006	0.007
<u>Copper Total EPA 200.7 (EPA 200.7)</u>									
7C31001-01	Effluent	03/31/17	04/04/17	04/06/17	1	<0.0020	mg/L	0.002	0.002

Viorel Vasile
Operations Manager



LABORATORY ANALYSIS RESULTS

Client: The Source Group, Inc. (SH)
Project No: 04-NDLA-013
Project Name: DFSP Norwalk GWETS NPDES Quarterly

AA Project No: A5332099
Date Received: 03/31/17
Date Reported: 04/12/17

Analyte	Reporting Result	Limit	Units	Spike Level	Source Result	%REC Limits	RPD	RPD Limit	Notes
General Chemistry Analyses - Quality Control									
<i>Batch B7C3106 - NO PREP</i>									
Blank (B7C3106-BLK1)				Prepared & Analyzed: 03/31/17					
Total Settleable Solids	<0.100	0.100	mL/L						
<i>Batch B7C3107 - NO PREP</i>									
Blank (B7C3107-BLK1)				Prepared & Analyzed: 03/31/17					
Chlorine Residual	<0.50	0.50	mg/L						
LCS (B7C3107-BS1)				Prepared & Analyzed: 03/31/17					
Chlorine Residual	0.800	0.50	mg/L	1.0		80.0 80-120			
LCS Dup (B7C3107-BSD1)				Prepared & Analyzed: 03/31/17					
Chlorine Residual	0.800	0.50	mg/L	1.0		80.0 80-120	0.00	20	
Duplicate (B7C3107-DUP1)				Source: 7C31001-01 Prepared & Analyzed: 03/31/17					
Chlorine Residual	<0.50	0.50	mg/L	<0.50				25	
<i>Batch B7C3108 - NO PREP</i>									
Blank (B7C3108-BLK1)				Prepared & Analyzed: 03/31/17					
Turbidity	<0.17	0.17	NTU						
Duplicate (B7C3108-DUP1)				Source: 7C31001-01 Prepared & Analyzed: 03/31/17					
Turbidity	<0.17	0.17	NTU		1.00			20	
<i>Batch B7C3113 - NO PREP</i>									
Blank (B7C3113-BLK1)				Prepared & Analyzed: 03/31/17					
HEM (Oil and Grease)	<5.0	5.0	mg/L						
LCS (B7C3113-BS1)				Prepared & Analyzed: 03/31/17					
HEM (Oil and Grease)	40.0	5.0	mg/L	40		100 75-125			
LCS Dup (B7C3113-BSD1)				Prepared & Analyzed: 03/31/17					
HEM (Oil and Grease)	31.8	5.0	mg/L	40		79.5 75-125	22.8	30	
<i>Batch B7D0422 - NO PREP</i>									
Blank (B7D0422-BLK1)				Prepared: 04/04/17 Analyzed: 04/05/17					
Total Dissolved Solids	<6.2	6.2	mg/L						
LCS (B7D0422-BS1)				Prepared: 04/04/17 Analyzed: 04/05/17					
Total Dissolved Solids	44.0	6.2	mg/L	50		88.0 80-120			
LCS Dup (B7D0422-BSD1)				Prepared: 04/04/17 Analyzed: 04/05/17					
Total Dissolved Solids	47.0	6.2	mg/L	50		94.0 80-120	6.59	25	

Viorel Vasile
Operations Manager



LABORATORY ANALYSIS RESULTS

Client: The Source Group, Inc. (SH)
Project No: 04-NDLA-013
Project Name: DFSP Norwalk GWETS NPDES Quarterly

AA Project No: A5332099
Date Received: 03/31/17
Date Reported: 04/12/17

Analyte	Reporting Result	Limit	Units	Spike Level	Source Result	%REC Limits	RPD	RPD Limit	Notes
General Chemistry Analyses - Quality Control									
<i>Batch B7D0422 - NO PREP</i>									
Duplicate (B7D0422-DUP1) Source: 7C30015-05 Prepared: 04/04/17 Analyzed: 04/05/17									
Total Dissolved Solids	6400	3100	mg/L		6250		2.37	20	
<i>Batch B7D0423 - NO PREP</i>									
Blank (B7D0423-BLK1) Prepared & Analyzed: 03/31/17									
Total Suspended Solids	<5.0	5.0	mg/L						
LCS (B7D0423-BS1) Prepared & Analyzed: 03/31/17									
Total Suspended Solids	46.0	5.0	mg/L	50		92.0	80-120		
LCS Dup (B7D0423-BSD1) Prepared & Analyzed: 03/31/17									
Total Suspended Solids	46.0	5.0	mg/L	50		92.0	80-120	0.00	20
Duplicate (B7D0423-DUP1) Source: 7C28022-01 Prepared & Analyzed: 03/31/17									
Total Suspended Solids	<5.0	5.0	mg/L		5.20				20
<i>Batch B7D0425 - NO PREP</i>									
Blank (B7D0425-BLK1) Prepared & Analyzed: 03/31/17									
Sulfide	<0.027	0.027	mg/L						
LCS (B7D0425-BS1) Prepared & Analyzed: 03/31/17									
Sulfide	0.486	0.027	mg/L	0.50		97.2	80-120		25
LCS Dup (B7D0425-BSD1) Prepared & Analyzed: 03/31/17									
Sulfide	0.508	0.027	mg/L	0.50		102	80-120	4.43	25
Duplicate (B7D0425-DUP1) Source: 7C31001-01 Prepared & Analyzed: 03/31/17									
Sulfide	<0.027	0.027	mg/L		<0.050				25
Matrix Spike (B7D0425-MS1) Source: 7C28022-01 Prepared & Analyzed: 03/31/17									
Sulfide	0.541	0.027	mg/L	0.50		108	75-125		25
Matrix Spike Dup (B7D0425-MSD1) Source: 7C28022-01 Prepared & Analyzed: 03/31/17									
Sulfide	0.529	0.027	mg/L	0.50		106	75-125	2.24	25
<i>Batch B7D1028 - *** DEFAULT PREP ***</i>									
Blank (B7D1028-BLK1) Prepared: 03/31/17 Analyzed: 04/05/17									
Biochemical Oxygen Demand	<5.0	5.0	mg/L						*
LCS (B7D1028-BS1) Prepared: 03/31/17 Analyzed: 04/05/17									
Biochemical Oxygen Demand	162	5.0	mg/L	200		81.2	80-120		20
<i>Batch B7D1029 - NO PREP</i>									

Viorel Vasile
 Operations Manager



LABORATORY ANALYSIS RESULTS

Client: The Source Group, Inc. (SH)
Project No: 04-NDLA-013
Project Name: DFSP Norwalk GWETS NPDES Quarterly

AA Project No: A5332099
Date Received: 03/31/17
Date Reported: 04/12/17

Analyte	Reporting Result	Limit	Units	Spike Level	Source Result	%REC	%REC Limits	RPD	RPD Limit	Notes
---------	------------------	-------	-------	-------------	---------------	------	-------------	-----	-----------	-------

General Chemistry Analyses - Quality Control

Batch B7D1029 - NO PREP

Blank (B7D1029-BLK1)				Prepared & Analyzed: 03/31/17						*
Methylene Blue Active Substances	<0.050	0.050	mg/L							
LCS (B7D1029-BS1)				Prepared & Analyzed: 03/31/17						*
Methylene Blue Active Substances	0.428	0.050	mg/L	0.50	85.5	75-125		15		
LCS Dup (B7D1029-BSD1)				Prepared & Analyzed: 03/31/17						*
Methylene Blue Active Substances	0.435	0.050	mg/L	0.50	87.0	75-125	1.74	15		
Matrix Spike (B7D1029-MS1)				Source: 7C31001-01 Prepared & Analyzed: 03/31/17						*
Methylene Blue Active Substances	0.428	0.050	mg/L	0.50	<0.050	85.5	75-125	15		
Matrix Spike Dup (B7D1029-MSD1)				Source: 7C31001-01 Prepared & Analyzed: 03/31/17						*
Methylene Blue Active Substances	0.422	0.050	mg/L	0.50	<0.050	84.5	75-125	1.18	15	

Batch B7D1030 - NO PREP

Blank (B7D1030-BLK1)				Prepared: 03/31/17 Analyzed: 04/03/17						*
Phenolics	<0.15	0.15	mg/L							
LCS (B7D1030-BS1)				Prepared: 03/31/17 Analyzed: 04/03/17						*
Phenolics	0.437	0.15	mg/L	0.50	87.4	80-120		15		
LCS Dup (B7D1030-BSD1)				Prepared: 03/31/17 Analyzed: 04/03/17						*
Phenolics	0.449	0.15	mg/L	0.50	89.8	80-120	2.71	15		
Matrix Spike (B7D1030-MS1)				Source: 7C31001-01 Prepared: 03/31/17 Analyzed: 04/03/17						*
Phenolics	0.458	0.15	mg/L	0.50	<0.30	91.6	80-120	15		
Matrix Spike Dup (B7D1030-MSD1)				Source: 7C31001-01 Prepared: 03/31/17 Analyzed: 04/03/17						*
Phenolics	0.453	0.15	mg/L	0.50	<0.30	90.6	80-120	1.10	15	

TPHG/BTEX/Oxygenates by GC/MS - Quality Control

Batch B7D1223 - EPA 5030B

Blank (B7D1223-BLK1)				Prepared & Analyzed: 04/11/17						
tert-Amyl Methyl Ether (TAME)	<0.30	0.30	ug/L							
Benzene	<0.20	0.20	ug/L							
tert-Butyl alcohol (TBA)	<7.0	7.0	ug/L							
Diisopropyl ether (DIPE)	<0.50	0.50	ug/L							
Ethylbenzene	<0.20	0.20	ug/L							
Ethyl-tert-Butyl Ether (ETBE)	<0.40	0.40	ug/L							

Viorel Vasile
Operations Manager



LABORATORY ANALYSIS RESULTS

Client: The Source Group, Inc. (SH)
Project No: 04-NDLA-013
Project Name: DFSP Norwalk GWETS NPDES Quarterly

AA Project No: A5332099
Date Received: 03/31/17
Date Reported: 04/12/17

Analyte	Reporting Result	Limit	Units	Spike Level	Source Result	%REC Limits	RPD	RPD Limit	Notes
TPHG/BTEX/Oxygenates by GC/MS - Quality Control									
<i>Batch B7D1223 - EPA 5030B</i>									
Blank (B7D1223-BLK1) Continued					Prepared & Analyzed: 04/11/17				
Gasoline Range Organics (GRO)	<40	40	ug/L						
Methyl-tert-Butyl Ether (MTBE)	<0.40	0.40	ug/L						
Toluene	<0.30	0.30	ug/L						
o-Xylene	<0.30	0.30	ug/L						
m,p-Xylenes	<0.40	0.40	ug/L						
<i>Surrogate: 4-Bromofluorobenzene</i>	<i>53.8</i>		<i>ug/L</i>	<i>50</i>		<i>108 70-140</i>			
<i>Surrogate: Dibromofluoromethane</i>	<i>57.1</i>		<i>ug/L</i>	<i>50</i>		<i>114 70-140</i>			
<i>Surrogate: Toluene-d8</i>	<i>51.2</i>		<i>ug/L</i>	<i>50</i>		<i>102 70-140</i>			
LCS (B7D1223-BS1)					Prepared & Analyzed: 04/11/17				
tert-Amyl Methyl Ether (TAME)	21.9	0.30	ug/L	20		110 70-130			
Benzene	22.7	0.20	ug/L	20		113 75-125			
tert-Butyl alcohol (TBA)	87.4	7.0	ug/L	100		87.4 70-130			
Diisopropyl ether (DIPE)	22.1	0.50	ug/L	20		111 70-130			
Ethylbenzene	22.8	0.20	ug/L	20		114 75-125			
Ethyl-tert-Butyl Ether (ETBE)	21.8	0.40	ug/L	20		109 70-130			
Gasoline Range Organics (GRO)	585	40	ug/L	500		117 70-130			
Methyl-tert-Butyl Ether (MTBE)	43.4	0.40	ug/L	40		108 70-135			
Toluene	21.7	0.30	ug/L	20		109 75-125			
o-Xylene	23.3	0.30	ug/L	20		116 75-125			
m,p-Xylenes	46.9	0.40	ug/L	40		117 70-130			
<i>Surrogate: 4-Bromofluorobenzene</i>	<i>52.7</i>		<i>ug/L</i>	<i>50</i>		<i>105 70-140</i>			
<i>Surrogate: Dibromofluoromethane</i>	<i>52.1</i>		<i>ug/L</i>	<i>50</i>		<i>104 70-140</i>			
<i>Surrogate: Toluene-d8</i>	<i>49.2</i>		<i>ug/L</i>	<i>50</i>		<i>98.4 70-140</i>			
Diesel Range Organics by GC/FID - Quality Control									
<i>Batch B7D0319 - EPA 3510C</i>									
Blank (B7D0319-BLK1)					Prepared & Analyzed: 04/03/17				
Diesel Range Organics as Diesel	<60	60	ug/L						
<i>Surrogate: o-Terphenyl</i>	<i>41.1</i>		<i>ug/L</i>	<i>40</i>		<i>103 50-150</i>			
LCS (B7D0319-BS1)					Prepared & Analyzed: 04/03/17				
Diesel Range Organics as Diesel	832	60	ug/L	800		104 75-125		30	

Viorel Vasile
 Operations Manager



LABORATORY ANALYSIS RESULTS

Client: The Source Group, Inc. (SH)
Project No: 04-NDLA-013
Project Name: DFSP Norwalk GWETS NPDES Quarterly

AA Project No: A5332099
Date Received: 03/31/17
Date Reported: 04/12/17

Analyte	Reporting Result	Limit	Units	Spike Level	Source Result	%REC	%REC Limits	RPD	RPD Limit	Notes
Diesel Range Organics by GC/FID - Quality Control										
<i>Batch B7D0319 - EPA 3510C</i>										
LCS (B7D0319-BS1) Continued Prepared & Analyzed: 04/03/17										
<i>Surrogate: o-Terphenyl</i>	52.0		ug/L	40		130	50-150			
LCS Dup (B7D0319-BSD1) Prepared & Analyzed: 04/03/17										
Diesel Range Organics as Diesel	811	60	ug/L	800		101	75-125	2.57	30	
<i>Surrogate: o-Terphenyl</i>	48.4		ug/L	40		121	50-150			
Total Metals by ICP Atomic Emission Spectroscopy - Quality Control										
<i>Batch B7D0421 - EPA 200.7</i>										
Blank (B7D0421-BLK1) Prepared: 04/04/17 Analyzed: 04/06/17										
Copper	<0.0020	0.0020	mg/L							
Arsenic	<0.0060	0.0060	mg/L							
LCS (B7D0421-BS1) Prepared: 04/04/17 Analyzed: 04/06/17										
Arsenic	1.05	0.0060	mg/L	1.0		105	80-120		20	
Copper	0.974	0.0020	mg/L	1.0		97.4	80-120		20	
LCS Dup (B7D0421-BSD1) Prepared: 04/04/17 Analyzed: 04/06/17										
Arsenic	1.06	0.0060	mg/L	1.0		106	80-120	1.32	20	
Copper	0.984	0.0020	mg/L	1.0		98.4	80-120	1.04	20	
Matrix Spike (B7D0421-MS1) Source: 7C31001-01 Prepared: 04/04/17 Analyzed: 04/06/17										
Arsenic	1.04	0.0060	mg/L	1.0	<0.0070	104	75-125		20	
Copper	1.13	0.0020	mg/L	1.0	<0.0020	113	75-125		20	
Matrix Spike Dup (B7D0421-MSD1) Source: 7C31001-01 Prepared: 04/04/17 Analyzed: 04/06/17										
Arsenic	1.02	0.0060	mg/L	1.0	<0.0070	102	75-125	1.95	20	
Copper	1.14	0.0020	mg/L	1.0	<0.0020	114	75-125	0.881	20	

Viorel Vasile
 Operations Manager



LABORATORY ANALYSIS RESULTS

Client: The Source Group, Inc. (SH)
Project No: 04-NDLA-013
Project Name: DFSP Norwalk GWETS NPDES Quarterly

AA Project No: A5332099
Date Received: 03/31/17
Date Reported: 04/12/17

Special Notes

[1] = * : Subcontracted to a DOHS State-Certified Laboratory

Viorel Vasile
Operations Manager



American Environmental Testing Laboratory Inc.

2834 & 2908 North Naomi Street Burbank, CA 91504 • DOHS NO: 1541, LACSD NO: 10181
Tel: (888) 288-AETL • (818) 845-8200 • Fax: (818) 845-8840 • www.aetlab.com

Ordered By

American Analytics
9765 Eton Avenue
Chatsworth, CA 91311-4306

Number of Pages 7
Date Received 03/31/2017
Date Reported 04/06/2017

Telephone: (818)998-5547
Attention: Viorel Vasile

Job Number	Order Date	Client
87149	03/31/2017	AA

Project ID: A5337099/7C31001
Project Name: PO# 30032

Enclosed please find results of analyses of 1 water sample which was analyzed as specified on the attached chain of custody. If there are any questions, please do not hesitate to call.

Checked By: _____

Approved By: _____

Cyrus Razmara, Ph.D.
Laboratory Director



American Environmental Testing Laboratory Inc.

2834 North Naomi Street Burbank, CA 91504 • DOHS NO: 1541, LACSD NO: 10181
 Tel: (888) 288-AETL • (818) 845-8200 • Fax: (818) 845-8840 • www.aetlab.com

COOLER RECEIPT FORM

Client Name: <u>American Analy.</u>			
Project Name:			
AETL Job Number: <u>87149</u>			
Date Received: <u>03/31/17</u>		Received by: <u>Antia</u>	
Carrier: <input type="checkbox"/> AETL Courier <input checked="" type="checkbox"/> Client <input type="checkbox"/> GSO <input type="checkbox"/> FedEx <input type="checkbox"/> UPS			
<input type="checkbox"/> Others:			
Samples were received in: <input checked="" type="checkbox"/> Cooler (<u>1</u>) <input type="checkbox"/> Other (Specify):			
Inside temperature of shipping container No 1: <u>3-4</u> , No 2: _____, No 3: _____			
Type of sample containers: <input type="checkbox"/> VOA, <input type="checkbox"/> Glass bottles, <input type="checkbox"/> Wide mouth jars, <input checked="" type="checkbox"/> HDPE bottles, <input type="checkbox"/> Metal sleeves, <input type="checkbox"/> Others (Specify):			
How are samples preserved: <input type="checkbox"/> None, <input type="checkbox"/> Ice, <input checked="" type="checkbox"/> Blue Ice, <input type="checkbox"/> Dry Ice			
None, <u>HNO₃</u> , <u>NaOH</u> , <u>ZnOAc</u> , <u>HCl</u> , <u>Na₂S₂O₃</u> , <u>MeOH</u>			
Other (Specify): <u>H₂SO₄</u>			
	Yes	No, explain below	Name, if client was notified.
1. Are the COCs Correct?	<u>X</u>		
2. Are the Sample labels legible?	<u>X</u>		
3. Do samples match the COC?	<u>X</u>		
4. Are the required analyses clear?	<u>X</u>		
5. Is there enough samples for required analysis?	<u>X</u>		
6. Are samples sealed with evidence tape?	<u>X</u>	<u>X</u>	
7. Are sample containers in good condition?	<u>X</u>		
8. Are samples preserved?	<u>X</u>		
9. Are samples preserved properly for the intended analysis?	<u>X</u>		
10. Are the VOAs free of headspace?	<u>BIM</u>		
11. Are the jars free of headspace?	<u>P</u>		

Explain all "No" answers for above questions:



American Environmental Testing Laboratory Inc.

2834 & 2908 North Naomi Street Burbank, CA 91504 • DOHS NO: 1541, LACSD NO: 10181

Tel: (888) 288-AETL • (818) 845-8200 • Fax: (818) 845-8840 • www.aetlab.com

Page: 1 A

Ordered By

American Analytics
9765 Eton Avenue
Chatsworth, CA 91311-4306

Project ID: A5337099/7C31001
Date Received 03/31/2017
Date Reported 04/06/2017

Telephone: (818)998-5547
Attention: Viorel Vasile

Job Number	Order Date	Client
87149	03/31/2017	AA

CERTIFICATE OF ANALYSIS CASE NARRATIVE

AETL received 1 samples with the following specification on 03/31/2017.

Lab ID	Sample ID	Sample Date	Matrix	Quantity Of Containers	
87149.01	7C31001-01	03/31/2017	Aqueous	2	
Method ^	Submethod	Req Date	Priority	TAT	Units
420.1		04/07/2017	2	Normal	mg/L
SM-5540C		04/07/2017	2	Normal	mg/L
SM5210B		04/07/2017	2	Normal	mg/L

The samples were analyzed as specified on the enclosed chain of custody. No analytical non-conformances were encountered.

Checked By: _____

Approved By: _____

Cyrus Razmara, Ph.D.
Laboratory Director



American Environmental Testing Laboratory Inc.

2834 & 2908 North Naomi Street Burbank, CA 91504 • DOHS NO: 1541, LACSD NO: 10181
Tel: (888) 288-AETL • (818) 845-8200 • Fax: (818) 845-8840 • www.aetlab.com

ANALYTICAL RESULTS

Ordered By

American Analytics
9765 Eton Avenue
Chatsworth, CA 91311-4306

Telephone: (818)998-5547

Attn: Viorel Vasile

Page: **2**

Project ID: **A5337099/7C31001**

Project Name: **PO# 30032**

AETL Job Number	Submitted	Client
87149	03/31/2017	AA

Method: 420.1, Phenolics, Total Recoverable, Spectrophotometric, Manual

QC Batch No: PH040317-1

Our Lab I.D.		Method Blank	87149.01			
Client Sample I.D.			7C31001-01			
Date Sampled			03/31/2017			
Date Prepared		04/03/2017	04/03/2017			
Preparation Method		420.1	420.1			
Date Analyzed		04/03/2017	04/03/2017			
Matrix		Aqueous	Aqueous			
Units		mg/L	mg/L			
Dilution Factor		1	1			
Analytes	MDL	PQL	Results	Results		
Phenolic compounds as phenol	0.15	0.30	ND	ND		



American Environmental Testing Laboratory Inc.

2834 & 2908 North Naomi Street Burbank, CA 91504 • DOHS NO: 1541, LACSD NO: 10181
Tel: (888) 288-AETL • (818) 845-8200 • Fax: (818) 845-8840 • www.aetlab.com

ANALYTICAL RESULTS

Ordered By

American Analytics
9765 Eton Avenue
Chatsworth, CA 91311-4306

Telephone: (818)998-5547

Attn: Viorel Vasile

Page: **3**

Project ID: **A5337099/7C31001**

Project Name: **PO# 30032**

AETL Job Number	Submitted	Client
87149	03/31/2017	AA

Method: SM-5540C, Methylene Blue Active Substances (MBAS)

QC Batch No: MB033117-1

Our Lab I.D.		Method Blank	87149.01			
Client Sample I.D.			7C31001-01			
Date Sampled			03/31/2017			
Date Prepared		03/31/2017	03/31/2017			
Preparation Method		SM5540C	SM5540C			
Date Analyzed		03/31/2017	03/31/2017			
Matrix		Aqueous	Aqueous			
Units		mg/L	mg/L			
Dilution Factor		1	1			
Analytes	MDL	PQL	Results	Results		
Surfactants (MBAS)	0.05	0.05	ND	ND		



American Environmental Testing Laboratory Inc.

2834 & 2908 North Naomi Street Burbank, CA 91504 • DOHS NO: 1541, LACSD NO: 10181
Tel: (888) 288-AETL • (818) 845-8200 • Fax: (818) 845-8840 • www.aetlab.com

ANALYTICAL RESULTS

Ordered By

American Analytics
9765 Eton Avenue
Chatsworth, CA 91311-4306

Telephone: (818)998-5547

Attn: Viorel Vasile

Page: **4**

Project ID: **A5337099/7C31001**

Project Name: **PO# 30032**

AETL Job Number	Submitted	Client
87149	03/31/2017	AA

Method: SM5210B, Biochemical Oxygen Demand 5 days, @ 20C (Standard Methods)

QC Batch No: BO033117-1

Our Lab I.D.		Method Blank	87149.01			
Client Sample I.D.			7C31001-01			
Date Sampled			03/31/2017			
Date Prepared		03/31/2017	03/31/2017			
Preparation Method		SM5210B	SM5210B			
Date Analyzed		04/05/2017	04/05/2017			
Matrix		Aqueous	Aqueous			
Units		mg/L	mg/L			
Dilution Factor		1	1			
Analytes	MDL	PQL	Results	Results		
Biochemical Oxygen Demand (BOD)	5.0	5.0	ND	ND		



American Environmental Testing Laboratory Inc.

2834 & 2908 North Naomi Street Burbank, CA 91504 • DOHS NO: 1541, LACSD NO: 10181
 Tel: (888) 288-AETL • (818) 845-8200 • Fax: (818) 845-8840 • www.aetlab.com

QUALITY CONTROL RESULTS

Ordered By

American Analytics
 9765 Eton Avenue
 Chatsworth, CA 91311-4306

Telephone: (818)998-5547

Attn: Viorel Vasile

Page: **5**

Project ID: **A5337099/7C31001**

Project Name: **PO# 30032**

AETL Job Number	Submitted	Client
87149	03/31/2017	AA

Method: 420.1, Phenolics, Total Recoverable, Spectrophotometric, Manual

QC Batch No: PH040317-1; Dup or Spiked Sample: 87149.01; LCS: Clean Water; QC Prepared: 04/03/2017; QC Analyzed: 04/03/2017;
 Units: mg/L

Analytes	MS Concen	MS Recov	MS % REC	MS DUP Concen	MS DUP Recov	MS DUP % REC	RPD %	MS/MSD % Limit	MS RPD % Limit	
Phenol	0.500	0.458	91.6	0.500	0.453	90.6	1.1	80-120	<15	

QC Batch No: PH040317-1; Dup or Spiked Sample: 87149.01; LCS: Clean Water; QC Prepared: 04/03/2017; QC Analyzed: 04/03/2017;
 Units: mg/L

Analytes	LCS Concen	LCS Recov	LCS % REC	LCS DUP Concen	LCS DUP Recov	LCS DUP % REC	LCS RPD % REC	LCS/LCSD % Limit	LCS RPD % Limit	
Phenol	0.500	0.467	93.4	0.500	0.449	89.8	3.9	80-120	<20	



American Environmental Testing Laboratory Inc.

2834 & 2908 North Naomi Street Burbank, CA 91504 • DOHS NO: 1541, LACSD NO: 10181
 Tel: (888) 288-AETL • (818) 845-8200 • Fax: (818) 845-8840 • www.aetlab.com

QUALITY CONTROL RESULTS

Ordered By

American Analytics
 9765 Eton Avenue
 Chatsworth, CA 91311-4306

Telephone: (818)998-5547

Attn: Viorel Vasile

Page: **6**

Project ID: **A5337099/7C31001**

Project Name: **PO# 30032**

AETL Job Number	Submitted	Client
87149	03/31/2017	AA

Method: SM-5540C, Methylene Blue Active Substances (MBAS)

QC Batch No: MB033117-1; Dup or Spiked Sample: 87149.01; LCS: Clean Water; QC Prepared: 03/31/2017; QC Analyzed: 03/31/2017;
 Units: mg/L

Analytes	Sample Result	MS Concen	MS Recov	MS % REC	MS DUP Concen	MS DUP Recov	MS DUP % REC	RPD %	MS/MSD % Limit	MS RPD % Limit
Surfactants (MBAS)	0.00	0.200	0.175	87.6	0.200	0.169	84.4	3.7	80-120	<15

QC Batch No: MB033117-1; Dup or Spiked Sample: 87149.01; LCS: Clean Water; QC Prepared: 03/31/2017; QC Analyzed: 03/31/2017;
 Units: mg/L

Analytes	LCS Concen	LCS Recov	LCS % REC	LCS DUP Concen	LCS DUP Recov	LCS DUP % REC	LCS RPD % REC	LCS/LCSD % Limit	LCS RPD % Limit
Surfactants (MBAS)	0.200	0.171	85.6	0.200	0.174	87.2	1.9	80-120	<15



American Environmental Testing Laboratory Inc.

2834 & 2908 North Naomi Street Burbank, CA 91504 • DOHS NO: 1541, LACSD NO: 10181
 Tel: (888) 288-AETL • (818) 845-8200 • Fax: (818) 845-8840 • www.aetlab.com

QUALITY CONTROL RESULTS

Ordered By

American Analytics
 9765 Eton Avenue
 Chatsworth, CA 91311-4306

Telephone: (818)998-5547

Attn: Viorel Vasile

Page: **7**

Project ID: **A5337099/7C31001**

Project Name: **PO# 30032**

AETL Job Number	Submitted	Client
87149	03/31/2017	AA

Method: SM5210B, Biochemical Oxygen Demand 5 days, @ 20C (Standard Methods)

QC Batch No: BO033117-1; Dup or Spiked Sample: 87149.01; LCS: Clean Water; LCS Prepared: 03/31/2017; LCS Analyzed: 04/05/2017;
 Units: mg/L

Analytes	SM Result	SM DUP Result	RPD %	SM RPD % Limit						
Biochemical Oxygen Demand (BOD)	ND	ND	<1	<15						

QC Batch No: BO033117-1; Dup or Spiked Sample: 87149.01; LCS: Clean Water; LCS Prepared: 03/31/2017; LCS Analyzed: 04/05/2017;
 Units: mg/L

Analytes	LCS Concen	LCS Recov	LCS % REC	LCS DUP Concen	LCS DUP Recov	LCS DUP % REC	LCS RPD % REC	LCS/LCSD % Limit	LCS RPD % Limit	
Biochemical Oxygen Demand (BOD)	198	162	81.8	198	164	82.8	1.2	80-120	<15	



American Environmental Testing Laboratory Inc.

2834 & 2908 North Naomi Street, Burbank, CA 91504 • DOHS NO: 1541, LACSD NO: 10181
Tel: (888) 288-AETL • (818) 845-8200 • Fax: (818) 845-8840 • www.aetlab.com

Data Qualifiers and Descriptors

Data Qualifier:

- #: Recovery is not within acceptable control limits.
- *: In the QC section, sample results have been taken directly from the ICP reading. No preparation factor has been applied.
- B: Analyte was present in the Method Blank.
- D: Result is from a diluted analysis.
- E: Result is beyond calibration limits and is estimated.
- H: Analysis was performed over the allowed holding time due to circumstances which were beyond laboratory control.
- J: Analyte was detected . However, the analyte concentration is an estimated value, which is between the Method Detection Limit (MDL) and the Practical Quantitation Limit (PQL).
- M: Matrix spike recovery is outside control limits due to matrix interference. Laboratory Control Sample recovery was acceptable.
- MCL: Maximum Contaminant Level
- NS: No Standard Available
- S6: Surrogate recovery is outside control limits due to matrix interference.
- S8: The analysis of the sample required a dilution such that the surrogate concentration was diluted below the method acceptance criteria.
- X: Results represent LCS and LCSD data.

Definition:

- %Limi: Percent acceptable limits.
- %REC: Percent recovery.
- Con.L: Acceptable Control Limits
- Conce: Added concentration to the sample.
- LCS: Laboratory Control Sample
- MDL: Method Detection Limit is a statistically derived number which is specific for each instrument, each method, and each compound. It indicates a distinctively detectable quantity with 99% probability.



American Environmental Testing Laboratory Inc.

2834 & 2908 North Naomi Street, Burbank, CA 91504 • DOHS NO: 1541, LACSD NO: 10181
Tel: (888) 288-AETL • (818) 845-8200 • Fax: (818) 845-8840 • www.aetlab.com

Data Qualifiers and Descriptors

MS:	Matrix Spike
MS DU:	Matrix Spike Duplicate
ND:	Analyte was not detected in the sample at or above MDL.
PQL:	Practical Quantitation Limit or ML (Minimum Level as per RWQCB) is the minimum concentration that can be quantified with more than 99% confidence. Taking into account all aspects of the entire analytical instrumentation and practice.
Recov:	Recovered concentration in the sample.
RPD:	Relative Percent Difference



9765 Eton Avenue
Chatsworth
California 91311
Tel: (818) 998-5547
Fax: (818) 998-7258

February 02, 2017

Neil Irish

The Source Group, Inc. (SH)
1962 Freeman Ave.
Signal Hill, CA 90755

**Re : DFSP Norwalk GWETS NPDES Monthly / 04-NDLA-013
A5332044 / 7A23009**

Enclosed is an analytical report for the above-referenced project. The samples included in this report were received on 01/23/17 16:20 and analyzed in accordance with the attached chain-of-custody.

Unless otherwise noted, all analytical testing was accomplished in accordance with the guidelines established in our Quality Assurance Program Manual, applicable standard operating procedures, and other related documentation. The results in this analytical report are limited to the samples tested and any reproduction thereof must be made in its entirety.

If you have any questions regarding this report or require additional information please call me at American Analytics.

Sincerely,

Viorel Vasile
Operations Manager



LABORATORY ANALYSIS RESULTS

Client: The Source Group, Inc. (SH)
Project No: 04-NDLA-013
Project Name: DFSP Norwalk GWETS NPDES Monthly

AA Project No: A5332044
Date Received: 01/23/17
Date Reported: 02/02/17

Sample ID	Laboratory ID	Matrix	TAT	Date Sampled	Date Received
-----------	---------------	--------	-----	--------------	---------------

Arsenic Total EPA 200.7

Effluent	7A23009-01	Water	5	01/23/17 09:40	01/23/17 16:20
----------	------------	-------	---	----------------	----------------

Viorel Vasile
Operations Manager



LABORATORY ANALYSIS RESULTS

Client: The Source Group, Inc. (SH)
Project No: 04-NDLA-013
Project Name: DFSP Norwalk GWETS NPDES Monthly
Method: Total Metals by ICP Atomic Emission Spectroscopy

AA Project No: A5332044
Date Received: 01/23/17
Date Reported: 02/02/17

AA I.D. No.	Client I.D. No.	Sampled	Prepared	Analyzed	Dilution	Result	Units	MDL	MRL
<u>Arsenic Total EPA 200.7 (EPA 200.7)</u>									
7A23009-01	Effluent	01/23/17	01/30/17	02/01/17	1	<0.0060	mg/L	0.006	0.007

Viorel Vasile
Operations Manager



LABORATORY ANALYSIS RESULTS

Client: The Source Group, Inc. (SH)
Project No: 04-NDLA-013
Project Name: DFSP Norwalk GWETS NPDES Monthly

AA Project No: A5332044
Date Received: 01/23/17
Date Reported: 02/02/17

Analyte	Reporting Result	Limit	Units	Spike Level	Source Result	%REC Limits	RPD	RPD Limit	Notes
Total Metals by ICP Atomic Emission Spectroscopy - Quality Control									
<i>Batch B7A3027 - EPA 200.7</i>									
Blank (B7A3027-BLK1)				Prepared: 01/30/17 Analyzed: 02/01/17					
Arsenic	<0.0060	0.0060	mg/L						
LCS (B7A3027-BS1)				Prepared: 01/30/17 Analyzed: 02/01/17					
Arsenic	1.08	0.0060	mg/L	1.0	108	80-120		20	
LCS Dup (B7A3027-BSD1)				Prepared: 01/30/17 Analyzed: 02/01/17					
Arsenic	1.05	0.0060	mg/L	1.0	105	80-120	2.63	20	

Viorel Vasile
Operations Manager



LABORATORY ANALYSIS RESULTS

Client: The Source Group, Inc. (SH)
Project No: 04-NDLA-013
Project Name: DFSP Norwalk GWETS NPDES Monthly

AA Project No: A5332044
Date Received: 01/23/17
Date Reported: 02/02/17

Special Notes

Viorel Vasile
Operations Manager



9765 Eton Avenue
Chatsworth
California 91311
Tel: (818) 998-5547
Fax: (818) 998-7258

February 13, 2017

Neil Irish

The Source Group, Inc. (SH)
1962 Freeman Ave.
Signal Hill, CA 90755

**Re : DFSP Norwalk GWETS NPDES Monthly / 04-NDLA-013
A5332050 / 7B01010**

Enclosed is an analytical report for the above-referenced project. The samples included in this report were received on 02/01/17 14:02 and analyzed in accordance with the attached chain-of-custody.

Unless otherwise noted, all analytical testing was accomplished in accordance with the guidelines established in our Quality Assurance Program Manual, applicable standard operating procedures, and other related documentation. The results in this analytical report are limited to the samples tested and any reproduction thereof must be made in its entirety.

If you have any questions regarding this report or require additional information please call me at American Analytics.

Sincerely,

Viorel Vasile
Operations Manager



LABORATORY ANALYSIS RESULTS

Client: The Source Group, Inc. (SH)
Project No: 04-NDLA-013
Project Name: DFSP Norwalk GWETS NPDES Monthly

AA Project No: A5332050
Date Received: 02/01/17
Date Reported: 02/13/17

Sample ID	Laboratory ID	Matrix	TAT	Date Sampled	Date Received
-----------	---------------	--------	-----	--------------	---------------

Arsenic Total EPA 200.7

Effluent	7B01010-05	Water	5	02/01/17 08:34	02/01/17 14:02
----------	------------	-------	---	----------------	----------------

Viorel Vasile
Operations Manager



LABORATORY ANALYSIS RESULTS

Client: The Source Group, Inc. (SH)
Project No: 04-NDLA-013
Project Name: DFSP Norwalk GWETS NPDES Monthly
Method: Total Metals by ICP Atomic Emission Spectroscopy

AA Project No: A5332050
Date Received: 02/01/17
Date Reported: 02/13/17

AA I.D. No.	Client I.D. No.	Sampled	Prepared	Analyzed	Dilution	Result	Units	MDL	MRL
<u>Arsenic Total EPA 200.7 (EPA 200.7)</u>									
7B01010-05	Effluent	02/01/17	02/07/17	02/08/17	1	<0.0060	mg/L	0.006	0.007

Viorel Vasile
Operations Manager



LABORATORY ANALYSIS RESULTS

Client: The Source Group, Inc. (SH)
Project No: 04-NDLA-013
Project Name: DFSP Norwalk GWETS NPDES Monthly

AA Project No: A5332050
Date Received: 02/01/17
Date Reported: 02/13/17

Analyte	Reporting Result	Reporting Limit	Units	Spike Level	Source Result	%REC	%REC Limits	RPD	RPD Limit	Notes
Total Metals by ICP Atomic Emission Spectroscopy - Quality Control										
<i>Batch B7B0711 - EPA 200.7</i>										
Blank (B7B0711-BLK1)				Prepared: 02/07/17 Analyzed: 02/08/17						
Arsenic	<0.0060	0.0060	mg/L							
LCS (B7B0711-BS1)				Prepared: 02/07/17 Analyzed: 02/08/17						
Arsenic	1.02	0.0060	mg/L	1.0	102	80-120			20	
LCS Dup (B7B0711-BSD1)				Prepared: 02/07/17 Analyzed: 02/08/17						
Arsenic	1.02	0.0060	mg/L	1.0	102	80-120	0.587		20	
Duplicate (B7B0711-DUP1)				Source: 7B01010-01 Prepared: 02/07/17 Analyzed: 02/08/17						
Arsenic	0.0765	0.0060	mg/L	0.0679				11.9	30	
Matrix Spike (B7B0711-MS1)				Source: 7B01010-05 Prepared: 02/07/17 Analyzed: 02/08/17						
Arsenic	0.971	0.0060	mg/L	1.0	<0.0070	97.1	75-125		20	
Matrix Spike Dup (B7B0711-MSD1)				Source: 7B01010-05 Prepared: 02/07/17 Analyzed: 02/08/17						
Arsenic	1.04	0.0060	mg/L	1.0	<0.0070	104	75-125	7.16	20	

Viorel Vasile
Operations Manager



LABORATORY ANALYSIS RESULTS

Client: The Source Group, Inc. (SH)
Project No: 04-NDLA-013
Project Name: DFSP Norwalk GWETS NPDES Monthly

AA Project No: A5332050
Date Received: 02/01/17
Date Reported: 02/13/17

Special Notes

Viorel Vasile
Operations Manager



9765 Eton Avenue
Chatsworth
California 91311
Tel: (818) 998-5547
Fax: (818) 998-7258

February 15, 2017

Neil Irish

The Source Group, Inc. (SH)

1962 Freeman Ave.

Signal Hill, CA 90755

**Re : DFSP Norwalk GWETS NPDES Annually / 04-NDLA-013
A5332056 / 7B07011**

Enclosed is an analytical report for the above-referenced project. The samples included in this report were received on 02/07/17 14:55 and analyzed in accordance with the attached chain-of-custody.

Unless otherwise noted, all analytical testing was accomplished in accordance with the guidelines established in our Quality Assurance Program Manual, applicable standard operating procedures, and other related documentation. The results in this analytical report are limited to the samples tested and any reproduction thereof must be made in its entirety.

If you have any questions regarding this report or require additional information please call me at American Analytics.

Sincerely,

Viorel Vasile

Operations Manager

LABORATORY REPORT



**Aquatic
Testing
Laboratories**

"dedicated to providing quality aquatic toxicity testing"

4350 Transport Street, Unit 107
Ventura, CA 93003
(805) 650-0546 FAX (805) 650-0756
CA ELAP Cert. No.: 1775

Date: February 13, 2017

Client: American Analytics
9765 Eton Avenue
Chatsworth, CA 91311
Attn: Viorel Vasile

Laboratory No.: A-17020803-001
Project No.: A5332056
Sample ID.: 7B07011-01

Sample Control: The sample was received by ATL chilled and with the chain of custody record attached. Sample received directly from the field in a cooler with ice.

Date Sampled: 02/07/17
Date Received: 02/08/17
Temp. Received: 5.8°C
Chlorine (TRC): 0.0 mg/l
Date Tested: 02/08/17 to 02/12/17

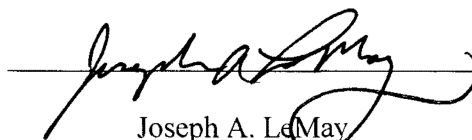
Sample Analysis: The following analyses were performed on your sample:
Fathead Minnow 96hr Percent Survival Bioassay (EPA-821-R-02-012 Method 2000.0);

Attached are the test data generated from the analysis of your sample. All testing was conducted under the direct supervision of Joseph A. LeMay. Daily test readings were taken by Joseph A. LeMay (initials: JAL) and Jacob LeMay (initials: J).

Result Summary:

<u>Sample ID.</u>	<u>Results</u>
7B07011-01	100% Survival (TUa = 0.0)

Quality Control: Reviewed and approved by:


Joseph A. LeMay
Laboratory Director

FATHEAD MINNOW PERCENT SURVIVAL TEST EPA Method 2000.0



Lab No.: A-17020803-001

Client/ID: American Analytics 7B07011-01

Start Date: 02/08/2017

TEST SUMMARY

Species: *Pimephales promelas*.

Age: 13 (1-14) days.

Regulations: NPDES.

Test solution volume: 250 ml.

Feeding: prior to renewal at 48 hrs.

Number of replicates: 4.

Control water: Moderately hard reconstituted water.

Photoperiod: 16/8 hrs light/dark.

Source: In-laboratory Culture.

Test type: Static-Renewal.

Test Protocol: EPA-821-R-02-012.

Endpoints: Percent Survival at 96 hrs.

Test chamber: 600 ml beakers.

Temperature: 20 +/- 1°C.

Number of fish per chamber: 10.

QA/QC No.: RT-170202.

TEST DATA

		°C	DO	pH	# Dead				Analyst & Time of Readings
					A	B	C	D	
INITIAL	Control	20.7	8.7	8.1	0	0	0	0	2-8-17 1400
	100%	20.6	8.6	7.6	0	0	0	0	
24 Hr	Control	20.5	8.6	8.0	0	0	0	0	2-9-17 1400
	100%	20.6	8.5	7.6	0	0	0	0	
48 Hr	Control	20.4	8.5	8.0	0	0	0	0	2-10-17 1400
	100%	20.3	8.4	7.5	0	0	0	0	
Renewal	Control	20.3	8.6	8.0	0	0	0	0	2-10-17 1400
	100%	20.4	8.7	7.7	0	0	0	0	
72 Hr	Control	20.3	8.6	8.0	0	0	0	0	2-11-17 1400
	100%	20.2	8.1	7.8	0	0	0	0	
96 Hr	Control	20.2	8.6	7.9	0	0	0	0	2-12-17 1400
	100%	20.3	8.4	7.5	0	0	0	0	

Comments:

Sample as received: Chlorine: 0 mg/l; Temp: 5.8 °C; DO: 5.5 mg/l; pH: 7.4 ;
 Alkalinity: 434 mg/l; Hardness: 839 mg/l; Conductivity: 1983 umho; NH₃-N: 0.3 mg/l.
 Sample aerated moderately (approx. 500 ml/min) to raise or lower DO? Yes / No.
 Control: Alkalinity: 60 mg/l; Hardness: 91 mg/l; Conductivity: 279 umho.
 Test solution aerated (not to exceed 100 bubbles/min) to maintain DO >4.0 mg/l? Yes / No.
 Original sample (-001) sample used for renewal kept at 0-6°C with minimal headspace.
 Dissolved Oxygen (DO) readings in mg/l O₂.

RESULTS

Percent Survival In: Control: 100 % 100% Sample: 100 %



***REFERENCE
TOXICANT
DATA***

FATHEAD MINNOW ACUTE Reference Toxicant - SDS



QA/QC Batch No.: RT-170202

TEST SUMMARY

Species: *Pimephales promelas*.
 Age: 14 days old.
 Regulations: NPDES.
 Test chamber volume: 250 ml.
 Feeding: Prior to renewal at 48 hrs.
 Temperature: 20 +/- 1°C.
 Number of replicates: 2.
 Dilution water: MHSF.

Source: In-lab culture.
 Test type: Static-Renewal.
 Test Protocol: EPA-821-R-02-012.
 Endpoints: LC50 at 96 hrs.
 Test chamber: 600 ml beakers.
 Aeration: None.
 Number of organisms per chamber: 10.
 Photoperiod: 16/8 hrs light/dark.

TEST DATA

Date/Time:	INITIAL			24 Hr					48 Hr				
	2-2-17 1330			2-3-17 1330					2-4-17 1330				
	?			?					?				
	°C	DO	pH	°C	DO	pH	# Dead		°C	DO	pH	# Dead	
A							B	A				B	
Control	20.4	8.7	8.0	20.3	8.6	8.0	0	0	20.1	8.6	8.0	0	0
1.0 mg/l	20.4	8.6	8.1	20.2	8.4	8.1	0	0	20.0	8.5	8.1	0	0
2.0 mg/l	20.4	8.5	8.1	20.2	8.3	8.0	0	0	20.1	8.4	8.1	0	0
4.0 mg/l	20.4	8.6	8.1	20.1	8.3	8.1	1	1	20.2	8.4	8.1	2	1
8.0 mg/l	20.4	8.7	8.1	20.2	8.3	8.1	10	10	-	-	-	-	-
16.0 mg/l	20.3	8.6	8.1	20.1	8.2	8.0	10	10	-	-	-	-	-

Date/Time:	RENEWAL			72 Hr					96 Hr				
	2-4-17 1330			2-5-17 1330					2-6-17 1330				
	?			?					?				
	°C	DO	pH	°C	DO	pH	# Dead		°C	DO	pH	# Dead	
A							B	A				B	
Control	20.2	8.7	8.0	20.0	8.5	8.1	0	0	19.8	8.1	8.2	0	0
1.0 mg/l	20.1	8.1	8.1	20.0	8.6	8.1	0	0	19.8	8.2	8.2	0	0
2.0 mg/l	20.0	8.3	8.1	20.0	8.5	8.1	0	0	19.8	8.3	8.2	0	0
4.0 mg/l	20.0	8.4	8.0	20.0	8.6	8.0	0	0	19.8	8.3	8.1	0	0
8.0 mg/l	-	-	-	-	-	-	-	-	-	-	-	-	-
16.0 mg/l	-	-	-	-	-	-	-	-	-	-	-	-	-

Comments: Control: Alkalinity: 60 mg/l; Hardness: 91 mg/l; Conductivity: 279 umho.
 SDS: Alkalinity: 60 mg/l; Hardness: 90 mg/l; Conductivity: 275 umho.

Concentration-response relationship acceptable? (see attached computer analysis):

Yes (response curve normal)
 No (dose interrupted indicated or non-normal)

Acute Fish Test-96 Hr Survival

Start Date: 2/2/2017 13:30 Test ID: RT170202f Sample ID: REF-Ref Toxicant
 End Date: 2/6/2017 13:30 Lab ID: CAATL-Aquatic Testing Labs Sample Type: SDS-Sodium dodecyl sulfate
 Sample Date: 2/2/2017 Protocol: CA DFG/DHS 1988 Test Species: PP-Pimephales promelas

Comments:

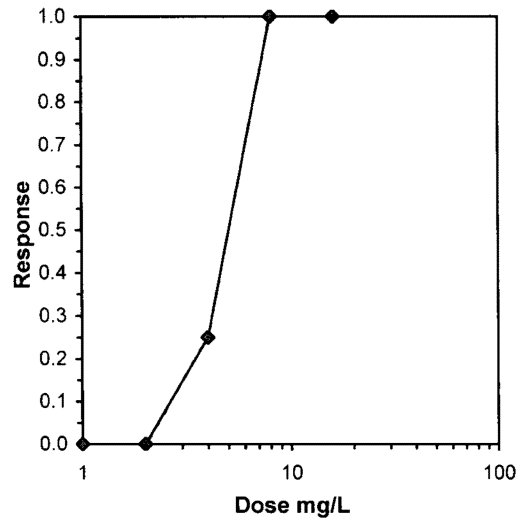
Conc-mg/L	1	2
D-Control	1.0000	1.0000
1	1.0000	1.0000
2	1.0000	1.0000
4	0.7000	0.8000
8	0.0000	0.0000
16	0.0000	0.0000

Conc-mg/L	Transform: Arcsin Square Root							Number Resp	Total Number
	Mean	N-Mean	Mean	Min	Max	CV%	N		
D-Control	1.0000	1.0000	1.4120	1.4120	1.4120	0.000	2	0	20
1	1.0000	1.0000	1.4120	1.4120	1.4120	0.000	2	0	20
2	1.0000	1.0000	1.4120	1.4120	1.4120	0.000	2	0	20
4	0.7500	0.7500	1.0492	0.9912	1.1071	7.818	2	5	20
8	0.0000	0.0000	0.1588	0.1588	0.1588	0.000	2	20	20
16	0.0000	0.0000	0.1588	0.1588	0.1588	0.000	2	20	20

Auxiliary Tests	Statistic	Critical	Skew	Kurt
Normality of the data set cannot be confirmed				
Equality of variance cannot be confirmed				

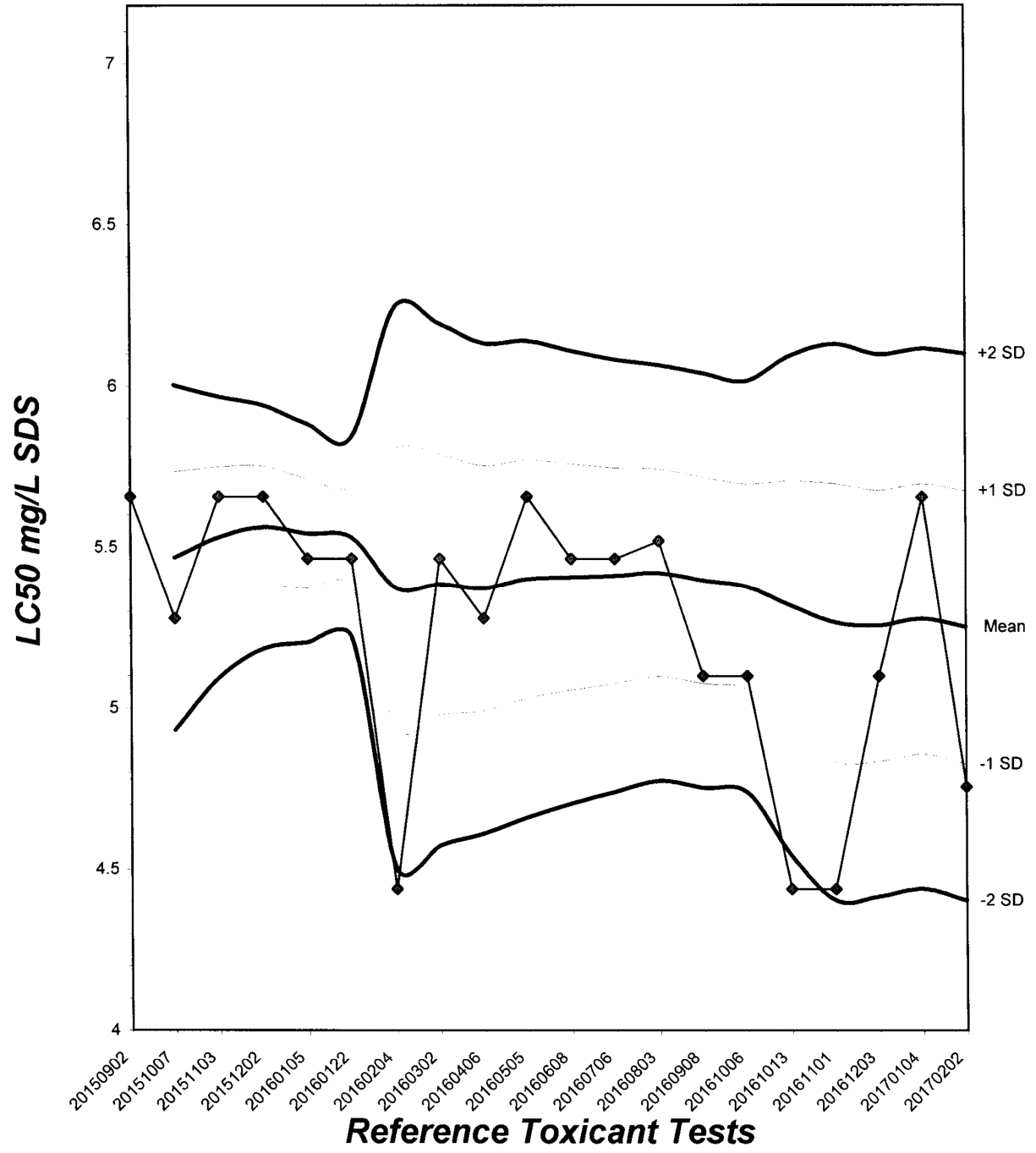
Trimmed Spearman-Kärber

Trim Level	EC50	95% CL	
0.0%	4.7568	4.1593	5.4402
5.0%	4.8369	4.1557	5.6297
10.0%	4.9104	4.1027	5.8771
20.0%	5.0203	3.7665	6.6915
Auto-0.0%	4.7568	4.1593	5.4402



Fathead Minnow Acute Laboratory Control Chart

CV% = 8.08



TEST ORGANISM LOG
FATHEAD MINNOW - LARVAL
(Pimephales promelas)



QA/QC BATCH NO.: RT-170202

SOURCE: In-Lab Culture

DATE HATCHED: 1-19-17

APPROXIMATE QUANTITY: 400

GENERAL APPEARANCE: 0

MORTALITIES 48 HOURS PRIOR TO
TO USE IN TESTING: 0

DATE USED IN LAB: 2 / 2 / 17

AVERAGE FISH WEIGHT: 0.006 gm

LOADING LIMITS: 0.65 gm/liter @ 20°C, 0.40 gm/liter @ 25°C

Approximately 1000 fish per 10 liters limit if held overnight for acclimation without filtration @ 20°C for fish with a mean weight of 0.006 gm.

Approximately 650 fish per 10 liters limit if held overnight for acclimation without filtration @ 25°C for fish with a mean weight of 0.006 gm.

200 ml test solution volume = 0.013 gm mean fish weight limit @ 20°C; 0.008 @ 25°C

250 ml test solution volume = 0.016 gm mean fish weight limit @ 20°C; 0.010 @ 25°C

ACCLIMATION WATER QUALITY:

Temp.: 20.4 °C

pH: 8.0 Ammonia: 0 mg/l NH₃-N

DO: 8.7 mg/l

Alkalinity: 60 mg/l

Hardness: 91 mg/l

READINGS RECORDED BY: JH

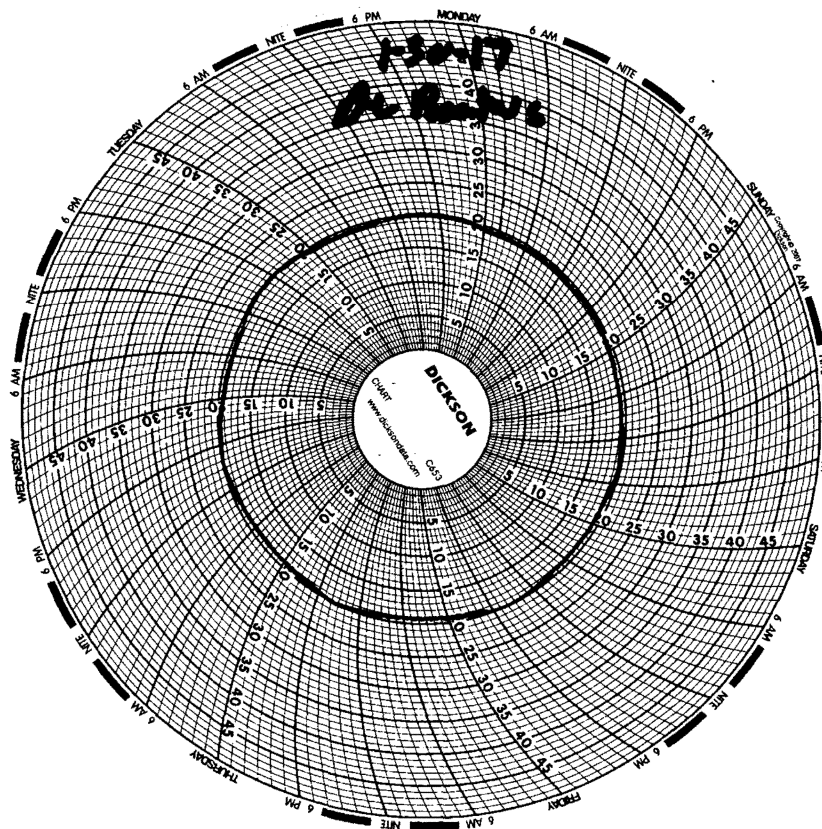
DATE: 2-2-17

Test Temperature Chart

Test No: *RT-170202*

Date Tested: *02/02/17 to 02/06/17*

Acceptable Range: *20 +/- 1°C*



APPENDIX B
Laboratory ELAP Certification



CALIFORNIA

Water Boards

STATE WATER RESOURCES CONTROL BOARD
REGIONAL WATER QUALITY CONTROL BOARDS



CALIFORNIA STATE

ENVIRONMENTAL LABORATORY ACCREDITATION PROGRAM

CERTIFICATE OF ENVIRONMENTAL ACCREDITATION

Is hereby granted to

American Analytics Inc.

Stationary Laboratory

9765 Eton Avenue

Chatsworth, CA 91311

Scope of the certificate is limited to the
"Fields of Testing"
which accompany this Certificate.

Continued accredited status depends on successful completion of on-site inspection,
proficiency testing studies, and payment of applicable fees.

This Certificate is granted in accordance with provisions of
Section 100825, et seq. of the Health and Safety Code.

Certificate No.: **1471**

Expiration Date: **3/31/2017**

Effective Date: **4/1/2015**

Sacramento, California
subject to forfeiture or revocation

Christine Sotelo, Chief
Environmental Laboratory Accreditation Program

APPENDIX C
Report Certification



DEFENSE LOGISTICS AGENCY
INSTALLATION SUPPORT FOR ENERGY
8725 JOHN J. KINGMAN ROAD
FORT BELVOIR VIRGINIA 22060-6221

April 12, 2017

Mr. Gensen Kai
California Regional Water Quality Control Board
Los Angeles Region
320 West 4th Street, Suite 200
Los Angeles, California 90013

Dear Mr. Kai:

In reference to General National Pollutant Discharge Elimination System (NPDES) Permit (NPDES No. CAG994004) CFN# CI-7585, please accept this letter as DLA's certification of the Groundwater Discharge Monitoring Report – Quarter 1 of calendar year 2017 for the Defense Fuel Support Point (DFSP) Norwalk facility in Norwalk, California.

I certify under penalty of law that this document and all attachments were prepared under my direction or supervision in accordance with a system designed to assure that qualified personnel properly gather and evaluate the information submitted. Based on my inquiry of the person or persons who manage the system, or those persons directly responsible for gathering the information, the information submitted is, to the best of my knowledge and belief, true, accurate and complete. I am aware that there are significant penalties submitting false information, including the possibility of a fine and imprisonment for knowing violations.

If you have any questions or need additional information concerning this document, please contact Ms. Carol Devier-Heeney at (703) 767-9813 or carol.devier-heeney@dla.mil.

Sincerely,

POTTER.WILLIAM
M.Y.1394566272

Digitally signed by
POTTER.WILLIAM.Y.1394566272
Date: 2017.04.13 09:22:03 -04'00'

William Y. Potter
Chief, Restoration Branch

Enclosure
As stated

cc:
CRWQB Information Technology Unit
Carol Devier-Heeney, DLA
Mike Wood, P.E., Senior Engineer, The Source Group, Inc.